



EMODnet



European Marine
Observation and
Data Network

EMODnet Thematic Lot n°0 –
*Bathymetry – High Resolution
Seabed Mapping (HRSM2)*

EASME/EMFF/2017/1.3.1.2/01/SI2.791269

**National coastlines and baselines – data set
collection for European countries**

Date: 18/12/2020

Prepared by: Sandra Gaytan Aguilar (Deltares) and Martin Verlaan
(Deltares)

Table of Contents

Table of Contents.....	1
Introduction	3
Disclaimer.....	4
General overview	5
1.1 Baseline	5
1.1.1 <i>Measuring and collecting legal base line data</i>	5
1.1.2 <i>Legal requirements of coastal states</i>	5
1.1.3 <i>Sources of information on legal baseline</i>	5
1.2 Coastlines.....	6
Country profiles.....	8
1.3 Albania	9
1.4 Belgium	10
1.5 Bulgaria	11
1.6 Croatia.....	12
1.7 Denmark.....	13
1.8 Estonia	14
1.9 Finland	15
1.10 France	16
1.11 Germany	18
1.12 Greece.....	19
1.13 Ireland.....	20
1.14 Island.....	21
1.15 Israel.....	22
1.16 Italy	23
1.17 Latvia.....	24
1.18 Lithuania	25
1.19 Malta.....	26
1.20 The Netherlands.....	27
1.21 Norway.....	28
1.22 Poland	29
1.23 Portugal.....	30
1.24 Romania	31
1.25 Slovenia.....	32
1.26 Spain	33
1.27 Sweden	34
1.28 United Kingdom	36
Annex – digital coastlines and baselines.....	37

“The information and views set out in this report are those of the author(s) and do not necessarily reflect the official opinion of the EASME or of the Commission. Neither the EASME, nor the Commission, guarantee the accuracy of the data included in this study. Neither the EASME, the Commission nor any person acting on the EASME's or on the Commission's behalf may be held responsible for the use which may be made of the information contained therein.”

Introduction

Coastlines, the boundaries of coastal waters and land, are crucial for coastal management, ecological and environmental assessment, therefore a clear identification of European coastal waters boundaries is crucial. The EMODnet-HRSM2 project aims to create and maintain an operational service providing free and open access to a collection of European Coastlines.

The collection is made possible with the help of many different organizations and institutes, many of them members of the EMODnet-HRSM2 project. Deltares has compiled available Coastlines and Baselines for the European waters and the main features are presented in this report. The first part of the document presents a general overview of the data gathered by country. The second part presents a more detailed description by country.

Disclaimer

The data contained in this report was collected with the utmost care. However, the content of the data is the responsibility of the competent authorities in the respective countries. And though the EMODnet-HRSM2 project has tried to represent all data as collected in a correct way, EMODnet-HRSM2 makes provides warranties of any kind, express or implied, about the completeness, accuracy, reliability, suitability or availability with respect to the information, products, services, or related graphics contained on the report for any purpose. Any reliance you place on such information is therefore strictly at your own risk. Moreover, the data may be updated by the competent national authorities without warning, in which case the data presented here will lag behind the official version.

In no event will we be liable for any loss or damage including without limitation, indirect or consequential loss or damage, or any loss or damage whatsoever arising from loss of data or profits are arising out of, or in connection with, the use of this report, data or information.

Through this report, the reader can find links to websites which are not under the control of EMODnet-HRSM2. Therefore, EMODnet-HRSM2 has no control over the nature, content and availability of those sites. The inclusion of any links does not necessarily imply a recommendation or endorsement of the views expressed within them.

General overview

1.1 Baseline

A baseline, as defined by the United Nations Convention on the Law of the Sea, is the line along the coast from which the seaward limits of a state's territorial sea and certain other maritime zones of jurisdiction are measured, such as a state's exclusive economic zone. Normally, a sea baseline follows the low-water line of a coastal state. The significance of baselines lies in the fact that a state's rights to maritime jurisdiction are measured from such baselines, the outer limits of the various territorial, economic and fishing zones being at a specified distance from the baseline. The establishment of baselines is a necessary step for a state to be able to claim zones of maritime jurisdiction, as it is essential to determine the points from which the breadth of such zones are measured. An understanding of a state's baselines is thus fundamental to the assessment of its maritime claim.

The rules for determining the baseline are determined by The United Nations Convention on the Law of the Sea (UNCLOS). As a line that marks the inner limit of the territorial sea and the outer limit of internal waters, the normal baseline for measuring these limits is the low-water line along the coast as marked on large-scale charts officially recognized by the coastal state. One of the most important facts to recognize is that the baseline and all of the zones are ambulatory. They are subject to change due to accretion and erosion of the shore.

Most countries measure their normal baseline on the basis of bathymetric information published by a Hydrographic Office (HO), which is sometimes part of the Navy. Paper charts have mainly been used in the past, and nowadays Electronic Navigational Charts (ENCs) are used as well.

1.1.1 Measuring and collecting legal base line data

1.1.2 Legal requirements of coastal states

Article 5 of UNCLOS states: except where otherwise provided in this convention, the normal baseline for measuring the breadth of the territorial sea is the low-water line along the coast as marked on large-scale charts officially recognized by the coastal state. UNCLOS requires that the baselines for measuring the breadth of the territorial sea should be shown on charts of a scale or scales adequate for ascertaining their position; and should give due publicity to such charts (or lists of geographical coordinates) and shall deposit a copy of each such chart or list with the Secretary-General of the United Nations.

1.1.3 Sources of information on legal baseline

Sources for establishing the legal baseline are often country-specific. As noted in 1.2 each state has its own obligation to make these charts accessible. However, there is currently no database containing legal baseline coordinates or charts for various countries. The knowledge is fragmented and difficult to ascertain. Nevertheless, various sources are available that can be used to build up a legal baseline database.

Also there are some activities of the Division of Ocean Affairs and the Law of the Sea (DOALOS) of the United Nations, aiming to build a data base that can provide such information. However is a rather user unfriendly database of lists of coordinates and maps. (See www.un.org/depts and www.oceansatlas.org)

DOALOS and IHO are improving the situation in a slow and ambitious process. They are developing a Law of the Sea data model (IHO S-121), to be used for the standardized future deposit of maritime claims by the nations. This will be presented in a GIS. The work follows from Resolution 59/24 of the General Assembly of the United Nations (4 February 2005). See especially Paragraph 6 in Section I.

The added value of the work of EMODnet-HRSM2 is that it progresses a lot faster than the DOALOS GIS project, and it is a lot more user friendly than the current Maritime Space database. In this collection task, we have limited ourselves to official sources only. There are some initiatives that apply the reasoning of UNCLOS to unofficial sources to extend the coverage, which we have not included here.

1.2 Coastlines

Within the EMODnet-HRSM2 project, one of the main ambitions is to have a complete set of coastlines for the European waters. In the same way as the baseline, information about coastline has been gathered per country. This information will to identify data gaps and for also for comparison with the satellite-derived coastline. The status of this compilation is also presented in Table 1.

Table 1 Baseline and coastline overview

Nr	Country	Baseline	Coastline
1	Albania	Available	N/A
2	Belgium	Available	Available
3	Bulgaria	N/A	Available
4	Croatia	N/A	Available
5	Cyprus	N/A	N/A
6	Denmark	Available	Available
7	Estonia	Available	N/A
8	Finland	Available	N/A
9	France	Available	Available
10	Georgia	N/A	N/A
11	Germany	Available	Available
12	Greece	Available	Available
13	Iceland	Available	N/A
14	Ireland	Available	Available
15	Israel	N/A	Available
16	Italy	Available	Available
17	Latvia	Available	Available
18	Lithuania	Available	N/A
19	Malta	Available	Available
20	Monaco	N/A	N/A
21	Montenegro	N/A	N/A
22	Netherlands	Available	Available
23	Norway	Available	Available
24	Poland	Available	N/A
25	Portugal	Available	Available
26	Romania	Available	Available
27	Russia	N/A	N/A
28	Slovenia	Available	Available
29	Spain	Available	Available
30	Sweden	N/A	Available
31	Turkey	N/A	N/A
32	Ukraine	N/A	N/A
33	United Kingdom	Available	Available

Country profiles

In this section we present by country (in alphabetic order) a short description of the data collection. Also, if there is information available with respect to the law to define the baseline, then is also included. In the following section, an estimation of the coastline length is included. This information is either provided by the partners or is information retrieved from the world atlas (www.worldatlas.com). Finally, a map for the underlying country with the baseline and the coastline is presented.

1.3 Albania

Country		Albania
<i>Data provider</i>	The United Nations Convention on the Law of the Sea (UNCLOS) data base.	
<i>Link available</i>	http://www.marineregions.org/documents/ALB_1990_7366.pdf	
Baseline		
<i>Laws specifying the position of the baseline</i>	Decree No. 4650, as amended by Decree No. 7366, dated 9 March 1990, on the State Border of the People's Socialist Republic of Albania	
<i>Law defining the baseline:</i>		
<i>Information available</i>	Coordinates of points determining the baseline	
Coastline		
<i>Coast length</i>	362 km	
<i>Coast area</i>	28,748 km ²	
<i>Information available</i>		

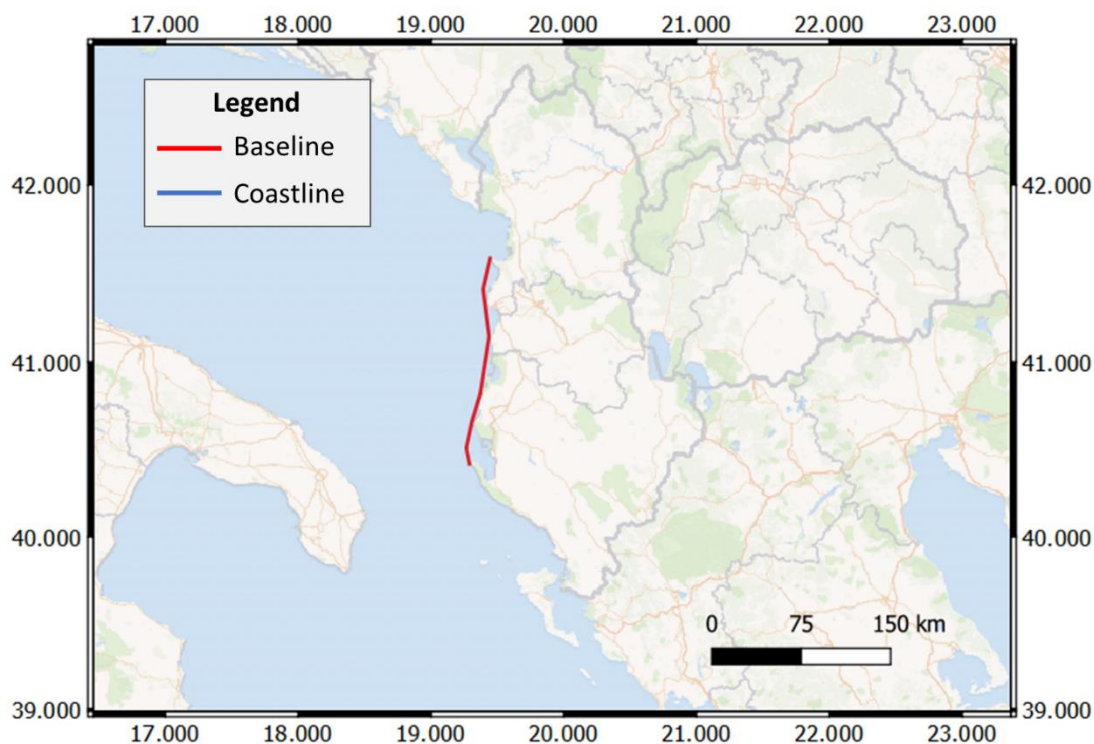


Figure 1 Visualization of the available Coastline and Baseline for Albania

1.4 Belgium

Country	Belgium
<i>Data provider</i>	Coastal Division, Flemish Hydrography (MDK),
<i>Link available</i>	www.afdelingkust.be/en/publications
Baseline	
<i>Laws specifying the position of the baseline</i>	Act concerning the exclusive economic zone of Belgium in the North Sea 22/04/1999
<i>Law defining the baseline:</i>	Act establishing the breadth of the territorial sea of Belgium, 6 October 1987
<i>Information available</i>	Coordinates of points determining the baseline
Coastline	
<i>Coast length</i>	66 km
<i>Coast area</i>	30,536 km ²
<i>Information available</i>	Coordinates of points determining the coastline



Figure 2 Visualization of the available Coastline and Baseline for Belgium

1.5 Bulgaria

Country	Bulgaria
<i>Data provider</i>	Institute of Oceanology - Bulgarian Academy of Science (IO-BAS)
<i>Link available</i>	Not available
Baseline	
<i>Laws specifying the position of the baseline</i>	Act of 8 July 1987 governing the ocean space of the People's Republic of Bulgaria 08/07/1987
<i>Law defining the baseline:</i>	
<i>Information available</i>	https://www.eea.europa.eu/data-and-maps/figures/maritime-boundaries
Coastline	
<i>Coast length</i>	354 km
<i>Coast area</i>	111,023 km ²
<i>Information available</i>	Coordinates of points determining the Coastline

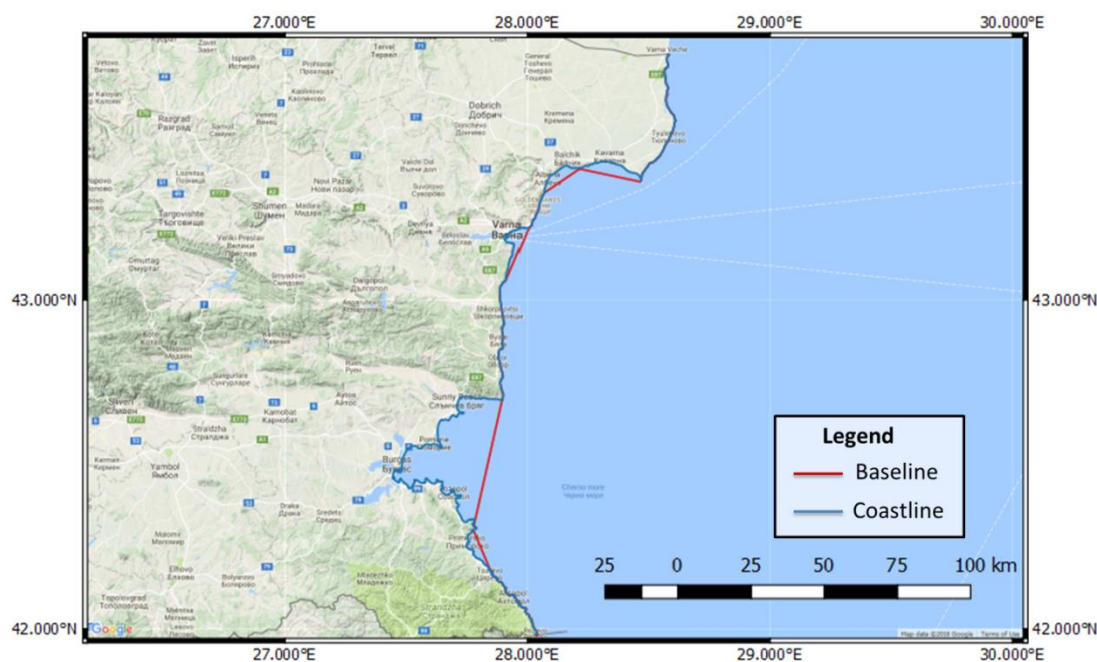


Figure 3 Visualization of the available Coastline and Baseline for Bulgaria

1.6 Croatia

Country	Croatia
<i>Data provider</i>	Hydrographic Institute of the Republic of Croatia (HHI)
<i>Link available</i>	Not available
Baseline	
<i>Laws specifying the position of the baseline</i>	
<i>Law defining the baseline:</i>	
<i>Information available</i>	No data available about the Baseline
Coastline	
<i>Coast length</i>	6,278 km
<i>Coast area</i>	
<i>Information available</i>	Coordinates of points determining the Coastline

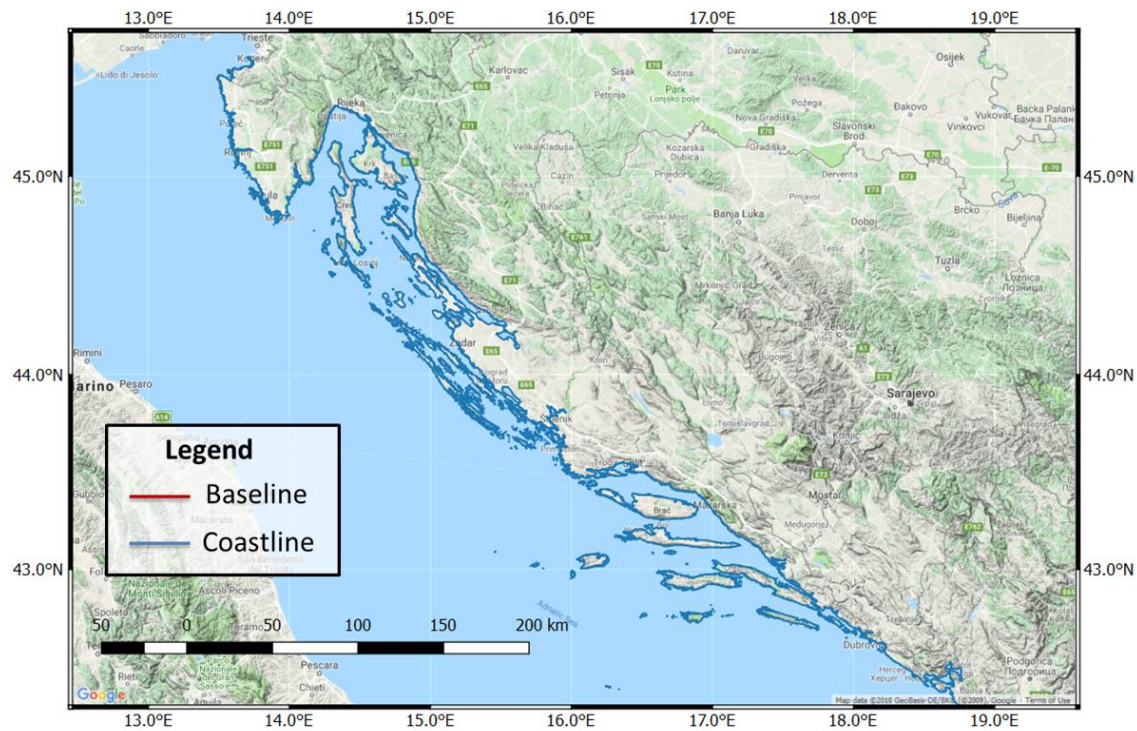


Figure 4 Visualization of the available Coastline and Baseline for Croatia

1.7 Denmark

Country	Denmark
<i>Data provider</i>	Danish Geodata Agency – Danish Hydrographic Service (GST)
<i>Link available</i>	
Baseline	
<i>Laws specifying the position of the baseline</i>	Excerpts from the Regulation on Order in the Frontier Areas and Territorial Waters and EEZ of the German Republic 15/06/1990
<i>Law defining the baseline:</i>	
<i>Information available</i>	Coordinates of points determining the Baseline
Coastline	
<i>Coast length</i>	7,300 km
<i>Coast area</i>	43,106 km ²
<i>Information available</i>	Coordinates of points determining the Coastline

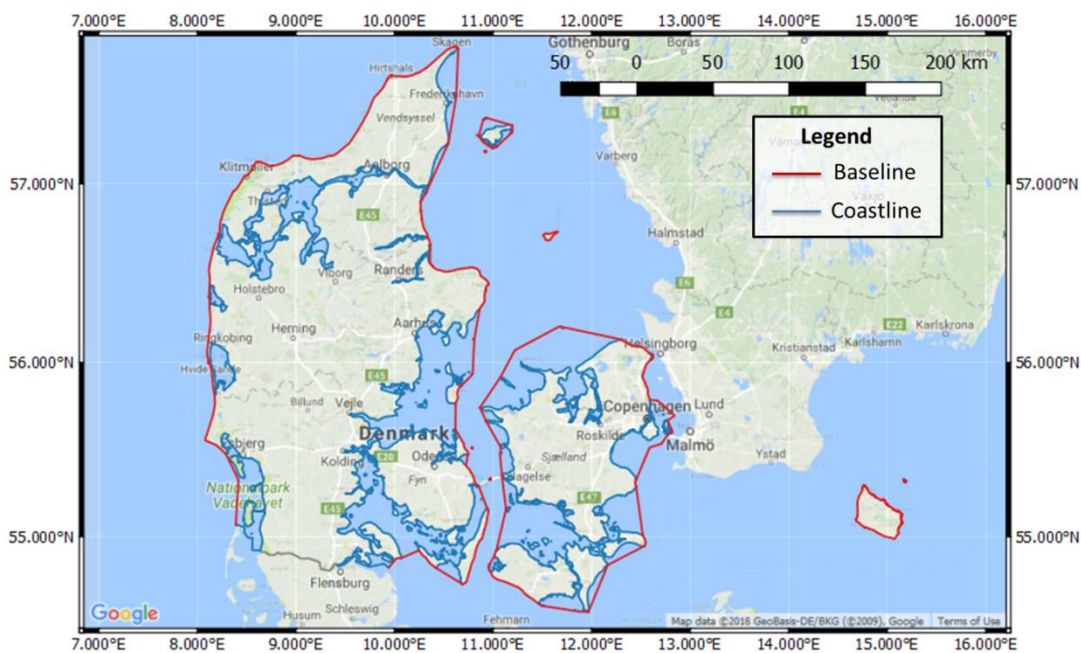


Figure 5 Visualization of the available Coastline and Baseline for Denmark

1.8 Estonia

Country		Estonia
<i>Data provider</i>		The United Nations Convention on the Law of the Sea (UNCLOS) data base.
<i>Link available</i>		http://www.marineregions.org/documents/EST_1993_Law.pdf
Baseline		
<i>Laws specifying the position of the baseline</i>		Law on the boundaries of the maritime tract, 10 March 1993
<i>Law defining the baseline:</i>		
<i>Information available</i>		Coordinates of points determining the Baseline
Coastline		
<i>Coast length</i>		3,800km
<i>Coast area</i>		
<i>Information available</i>		

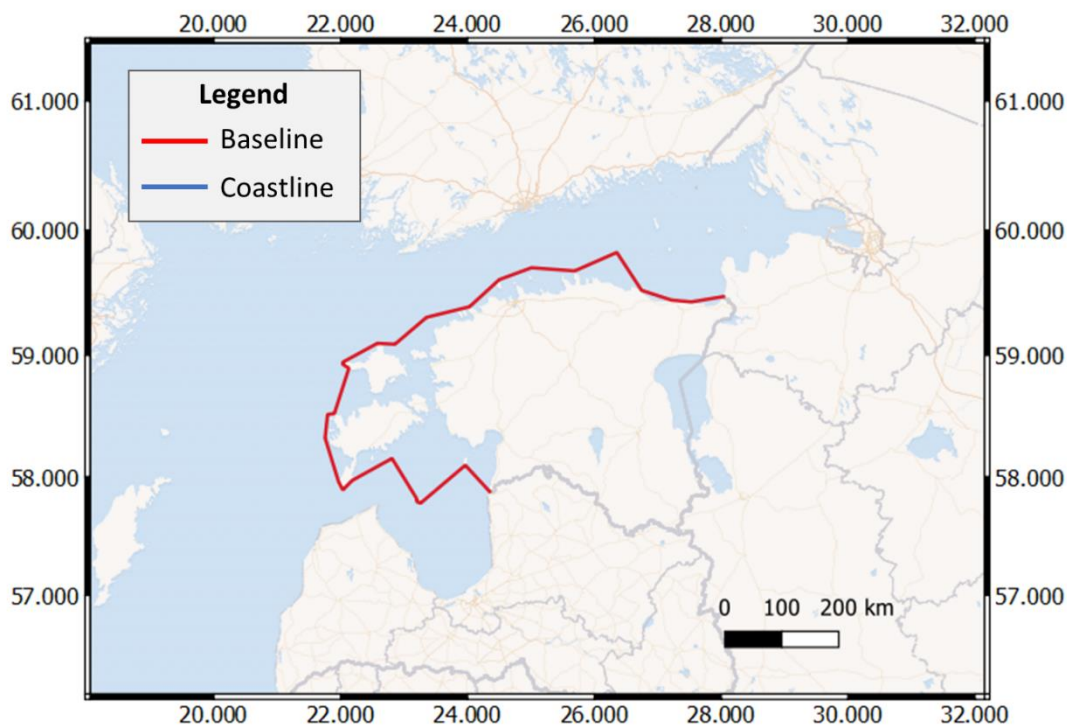


Figure 6 Visualization of the available Coastline and Baseline for Estonia

1.9 Finland

Country	Finland
<i>Data provider</i>	The United Nations Convention on the Law of the Sea (UNCLOS) data base.
<i>Link available</i>	http://www.marineregions.org/documents/FIN_1995_Decree.pdf
Baseline	
<i>Laws specifying the position of the baseline</i>	Delimitation of the Territorial Waters of Finland (No 993) issued in Helsinki on 31 July 1995(1)
<i>Law defining the baseline:</i>	
<i>Information available</i>	Coordinates of points determining the Baseline
Coastline	
<i>Coast length</i>	1,250 km
<i>Coast area</i>	
<i>Information available</i>	

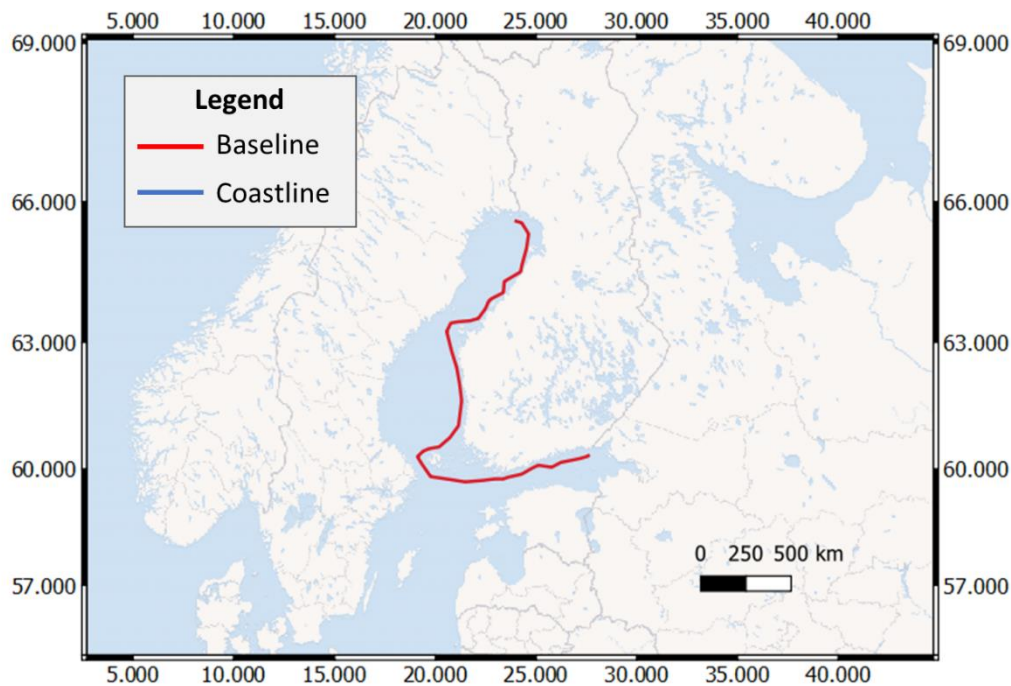


Figure 7 Visualization of the available Coastline and Baseline for Finland

1.10 France

Country	France
<i>Data provider</i>	Service Hydrographique et Océanographique de la Marine (SHOM)
<i>Link available</i>	maritimelimits.gouv.fr (from Sep 2018)
Baseline	
<i>Laws specifying the position of the baseline</i>	See Table 2
<i>Law defining the baseline:</i>	Ordonnance n° 2016-1687 du 8 décembre 2016 relative aux espaces maritimes relevant de la souveraineté ou de la juridiction de la République française
<i>Information available</i>	Coordinates point of the straight parts of the baseline
Coastline	
<i>Coast length</i>	13777 km only for mainland, Corsica included, and 14 739 km more for major part of outermost areas km
<i>Coast area</i>	543 965 km ²
<i>Information available</i>	Coordinates of points determining the Coastline



Figure 8 Visualization of the available Coastline and Baseline for France (Zoom 1)

Table 2 Laws specifying the position of the baseline

Territory	Object	Legal reference(s) in force
Mainland France	Base limits	Décret n° 2018-681 du 30 juillet 2018
Saint-Pierre and Miquelon	Base limits	Décret n° 2015-1528 du 24 novembre 2015
French Antilles	Base limits	Décret n° 2017-1511 du 30 octobre 2017
French Guiana	Base limits	Décret n° 2015-1611 du 8 décembre 2015
La Réunion	Base limits	Décret n° 2014-1309 du 30 octobre 2014
Mayotte	Base limits	Décret n° 2013-1177 du 17 décembre 2013
Scattered Islands (Tromelin Island, Glorioso Islands, Juan de Nova Island, Bassas de India and Europa Island)	Base limits	Décret n° 78-112 du 11 janvier 1978
St. Paul and Amsterdam Islands	Base limits	Décret n° 2013-1175 du 17 décembre 2013
Kerguelen islands	Base limits	Décret n° 2015-635 du 5 juin 2015
Archipelago of Crozet	Base limits	Décret n° 2015-551 du 18 mai 2015
Wallis-and- Futuna	Base limits	Décret n° 2013-1176 du 17 décembre 2013
New Caledonia	Base limits	Décret n° 2002-827 du 3 mai 2002
French Polynesia	Base limits	Décret n° 2012-1068 du 18 septembre 2012

Clipperton Island	Base limits	Décret n° 2015-550 du 18 mai 2015
-------------------	-------------	---

1.11 Germany

Country	Germany
<i>Data provider</i>	Federal Maritime and Hydrographic Agency (BSH)
<i>Link available</i>	https://www.geoseaportal.de/mapapps/?lang=en
Baseline	
<i>Laws specifying the position of the baseline</i>	
<i>Law defining the baseline:</i>	
<i>Information available</i>	Coordinates point of the straight parts of the baseline
Coastline	
<i>Coast length</i>	2,389 km
<i>Coast area</i>	
<i>Information available</i>	Coordinates of points determining the Coastline

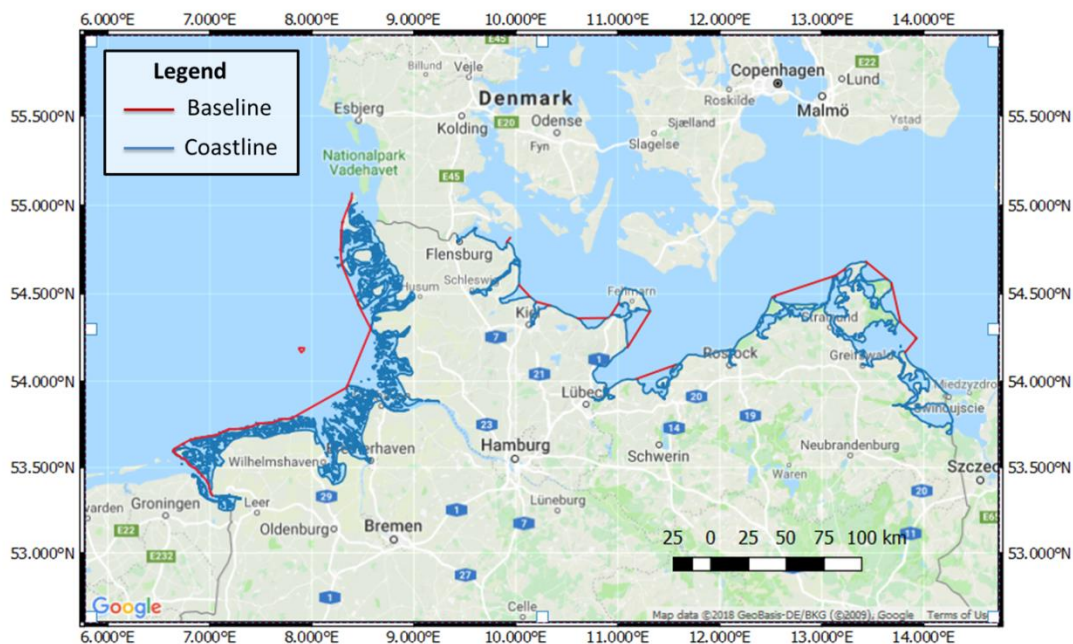


Figure 9 Visualization of the available Coastline and Baseline for Germany

1.12 Greece

Country	Greece
<i>Data provider</i>	Hellenic Navy Hydrographic Service (HNHS)
<i>Link available</i>	
Baseline	
<i>Laws specifying the position of the baseline</i>	
<i>Law defining the baseline:</i>	Law No. 230 of 17 September 1936
<i>Information available</i>	The baseline is defined as the coastline
Coastline	
<i>Coast length</i>	2,0816 km
<i>Coast area</i>	131,866.52 km ²
<i>Information available</i>	Coordinates of points determining the Coastline



Figure 10 Visualization of the available Coastline and Baseline for Greece

1.13 Ireland

Country	Ireland
<i>Data provider</i>	Geological Survey of Ireland (GSI)
<i>Link available</i>	
Baseline	
<i>Laws specifying the position of the baseline</i>	
<i>Law defining the baseline:</i>	
<i>Information available</i>	Coordinates of points determining the Baseline
Coastline	
<i>Coast length</i>	1448 km
<i>Coast area</i>	70 303 km ²
<i>Information available</i>	Coordinates of points determining the Coastline

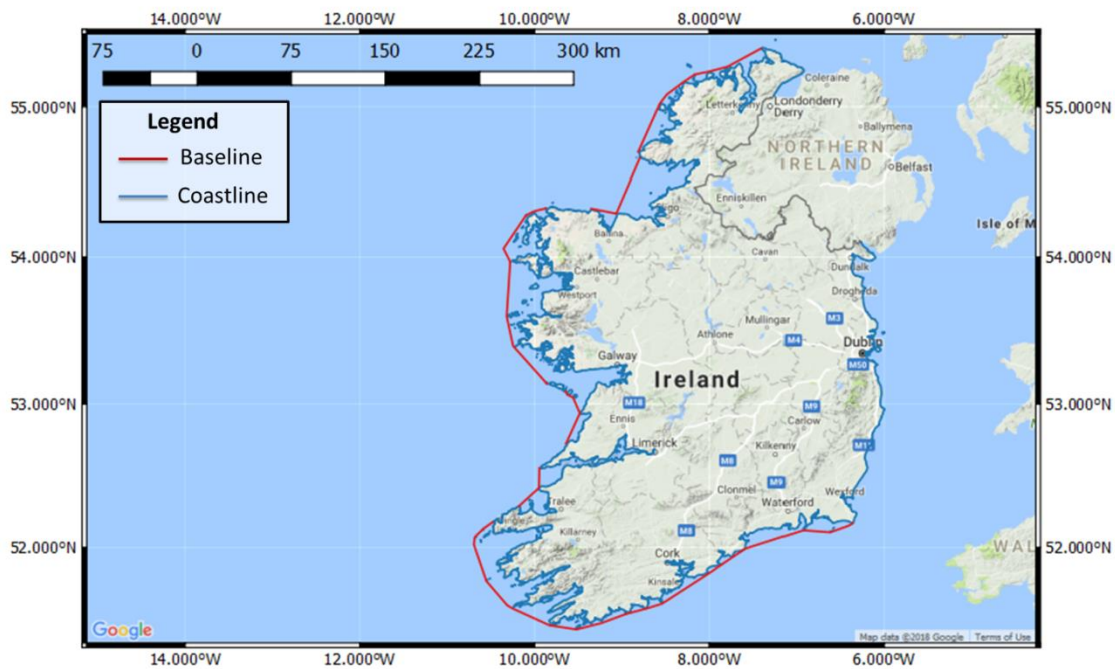


Figure 11 Visualization of the available Coastline and Baseline for Ireland

1.14 Island

Country	
<i>Data provider</i>	The United Nations Convention on the Law of the Sea (UNCLOS) data base.
<i>Link available</i>	http://www.marineregions.org/documents/ISL_1979_Law.pdf
Baseline	
<i>Laws specifying the position of the baseline</i>	Law No. 41 of 1 June 1979 concerning the Territorial Sea, the Economic Zone and the Continental Shelf
<i>Law defining the baseline:</i>	
<i>Information available</i>	Coordinates of points determining the Baseline
Coastline	
<i>Coast length</i>	4,970 km
<i>Coast area</i>	
<i>Information available</i>	

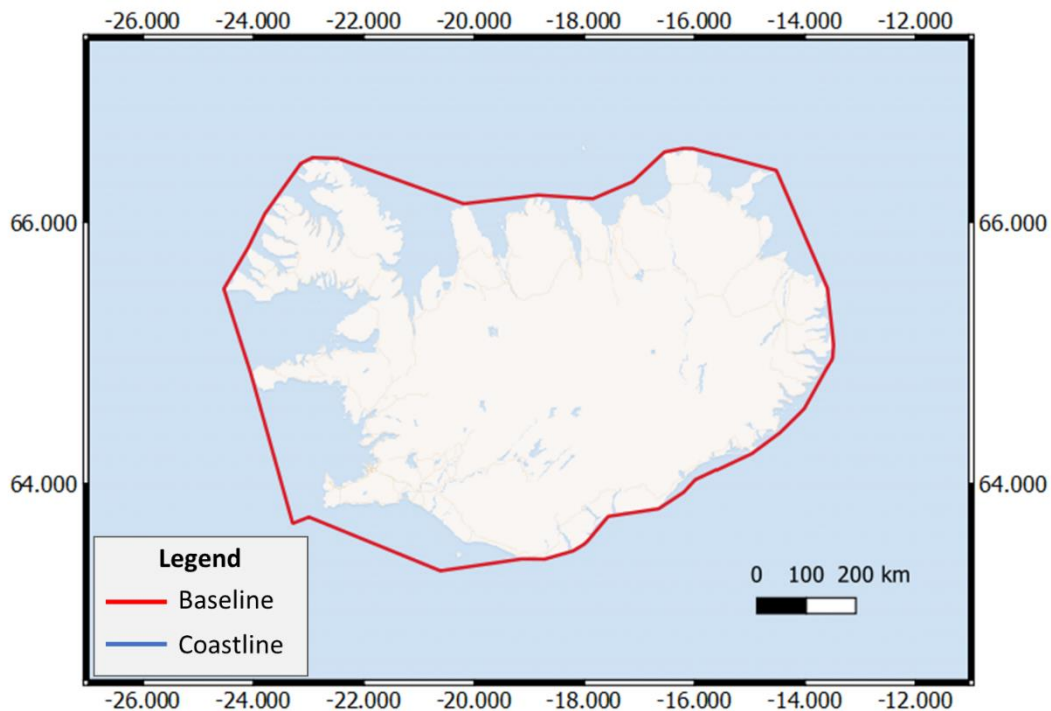


Figure 12 Visualization of the available Coastline and Baseline for Island

1.15 Israel

Country	Israel
<i>Data provider</i>	Israel Oceanographic and Limnological Research (IOLR)
<i>Link available</i>	
Baseline	
<i>Laws specifying the position of the baseline</i>	
<i>Law defining the baseline:</i>	
<i>Information available</i>	No data available about the Baseline
Coastline	
<i>Coast length</i>	km
<i>Coast area</i>	km ²
<i>Information available</i>	Coordinates of points determining the Coastline

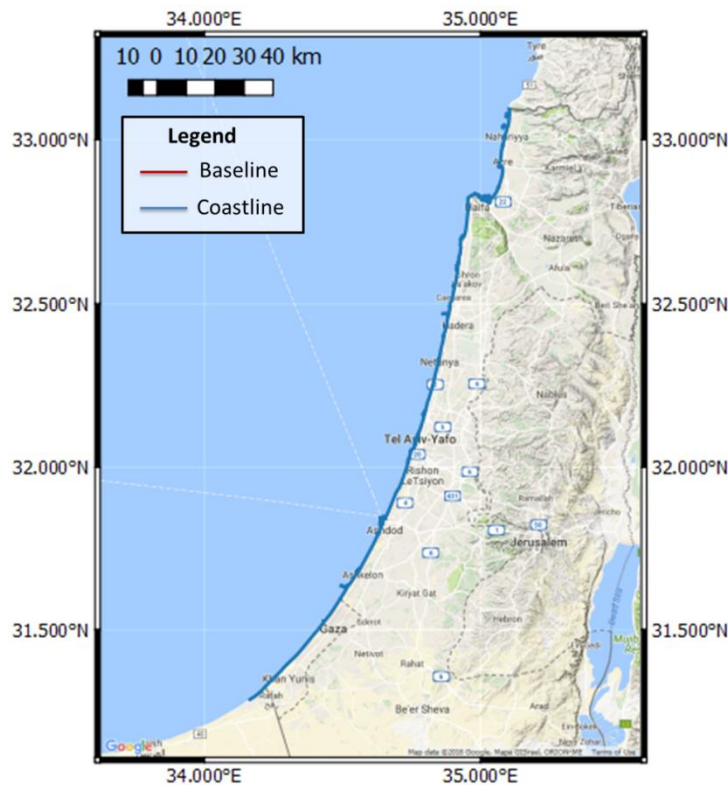


Figure 13 Visualization of the available Coastline and Baseline for Israel

1.16 Italy

Country	Italy
<i>Data provider</i>	CNR-ISMAR, CNR-IAMC, CNR-IGAG, OGS, CONISMA, IIM
<i>Link available</i>	
Baseline	
<i>Laws specifying the position of the baseline</i>	
<i>Law defining the baseline:</i>	
<i>Information available</i>	Coordinates point of the straight parts of the baseline
Coastline	
<i>Coast length</i>	7600 km
<i>Coast area</i>	301 230 km ²
<i>Information available</i>	



Figure 14 Visualization of the available Coastline and Baseline for Italy

1.17 Latvia

Country	Latvia
<i>Data provider</i>	Maritime Administration of Latvia (MAL)
<i>Link available</i>	https://likumi.lv/ta/id/215323-noteikumi-par-bazes-liniju-punktu-koordinatam
Baseline	
<i>Laws specifying the position of the baseline</i>	Law of the Republic of Latvia "On the Border of the Republic of Latvia. 01/01/1990
<i>Law defining the baseline:</i>	
<i>Information available</i>	Coordinates of points determining the Baseline
Coastline	
<i>Coast length</i>	531
<i>Coast area</i>	64626 km ²
<i>Information available</i>	Coordinates of points determining the Coastline

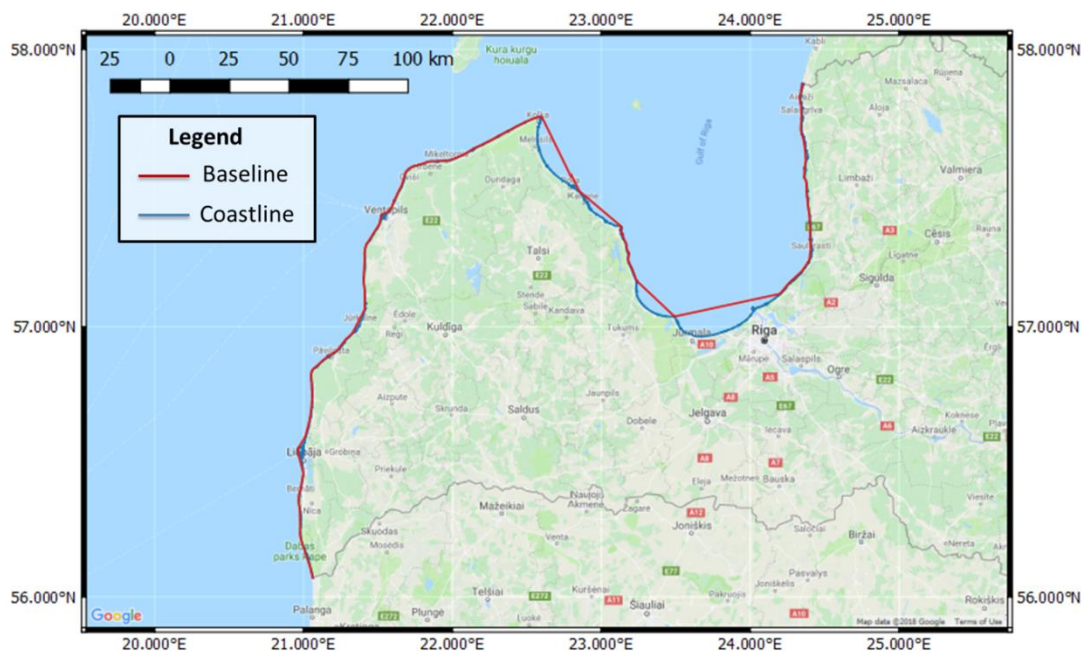


Figure 15 Visualization of the available Coastline and Baseline for Latvia

1.18 Lithuania

Country	
<i>Data provider</i>	Lithuania The United Nations Convention on the Law of the Sea (UNCLOS) data base.
<i>Link available</i>	http://www.marineregions.org/documents/ltu_mzn57_2006b.pdf
Baseline	
<i>Laws specifying the position of the baseline</i>	Annex 1 to Resolution No 1597 of 6 December 2004 of the Government of the Republic of Lithuania. Table 2. The state boundary with the Russian Federation.
<i>Law defining the baseline:</i>	
<i>Information available</i>	Coordinates of points determining the Baseline
Coastline	
<i>Coast length</i>	262km
<i>Coast area</i>	
<i>Information available</i>	

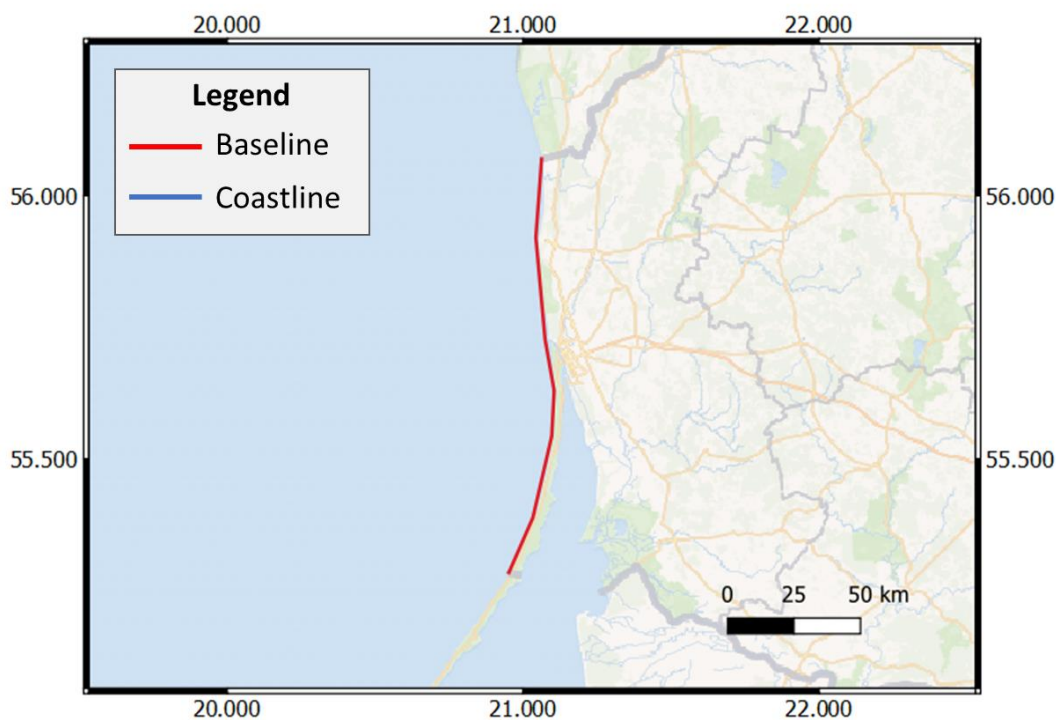


Figure 16 Visualization of the available Coastline and Baseline for Lithuania

1.19 Malta

Country	Malta
<i>Data provider</i>	Continental Shelf Department
<i>Link available</i>	http://continentalshef.gov.mt/en/Pages/Download-subscribe-maritime.aspx
Baseline	
<i>Laws specifying the position of the baseline</i>	
<i>Law defining the baseline:</i>	Territorial Waters and Contiguous Zone Act, No. XXXII of 1971, as amended by Acts XLVI of 1975, XXIV of 1978, XXVIII of 1981, I of 2002, X of 2005 and XXIX of 2014
<i>Information available</i>	Coordinates of points determining the Baseline
Coastline	
<i>Coast length</i>	196.8 km
<i>Coast area</i>	316 km ²
<i>Information available</i>	Coordinates of points determining the Coastline

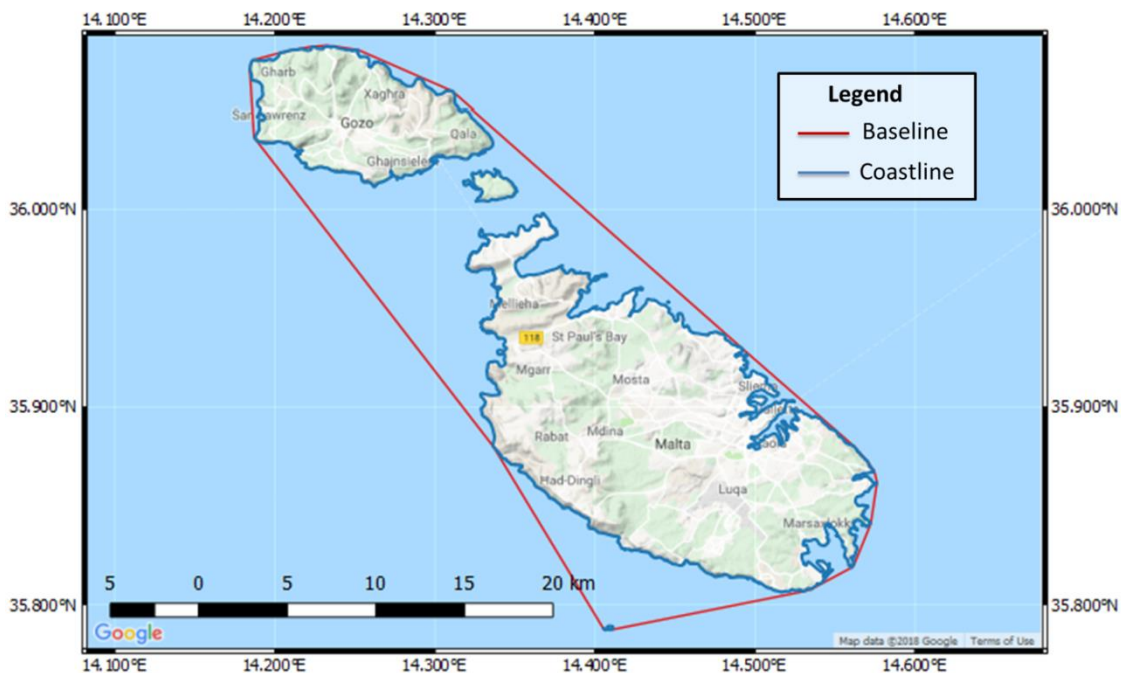
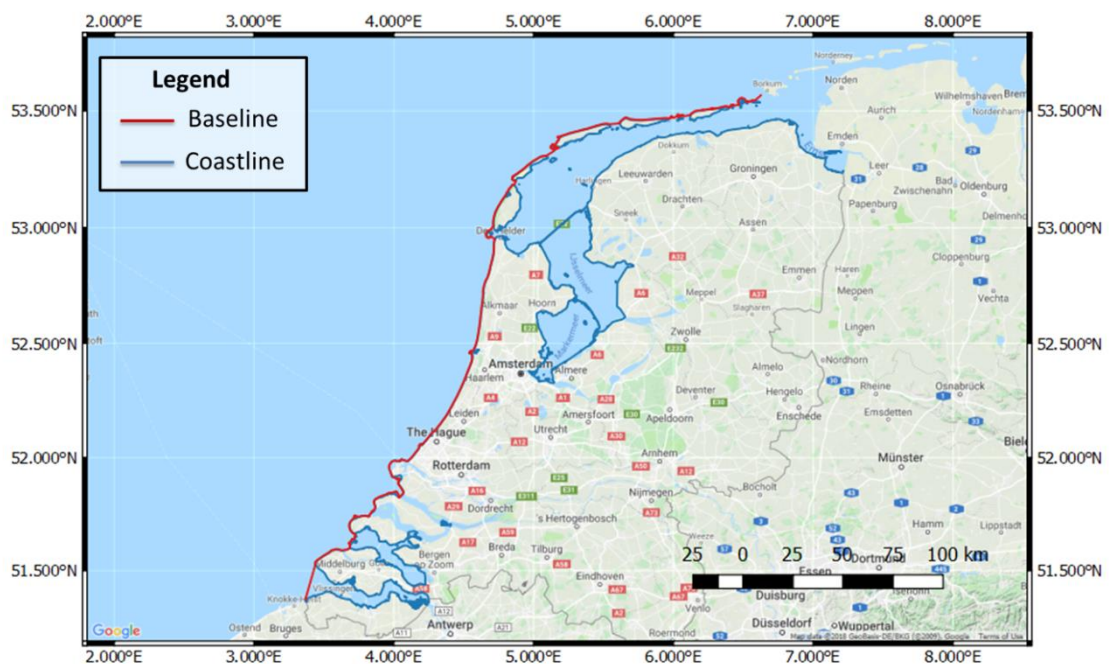


Figure 17 Visualization of the available Coastline and Baseline for Malta

1.20 The Netherlands

Country	The Netherlands
<i>Data provider</i>	The Hydrographic Service of the Royal Netherlands Navy (RNLN)
<i>Link available</i>	http://inspire.caris.nl/server/services/ows/wfs/borders_wfs?
Baseline	
<i>Laws specifying the position of the baseline</i>	
<i>Law defining the baseline:</i>	Netherlands Territorial Sea (Demarcation) Act of 9 January 1985
<i>Information available</i>	
Coastline	
<i>Coast length</i>	451 km
<i>Coast area</i>	41 536 km ²
<i>Information available</i>	Coordinates of points determining the Coastline

Figure 18 Visualization of the available Coastline and Baseline for The Netherlands



1.21 Norway

Country	Norway
<i>Data provider</i>	UNEP GRID-Arendal (GRID), Norwegian Mapping Authority – Hydrographic Service (NHS),
<i>Link available</i>	
Baseline	
<i>Laws specifying the position of the baseline</i>	
<i>Law defining the baseline:</i>	Royal Decree of 14 June 2002 for mainland Norway; Royal Decree of 1 June 2001 for Svalbard; and Royal Decree of 30 August 2002 for Jan Mayen
<i>Information available</i>	Coordinates of points determining the baseline
Coastline	
<i>Coast length</i>	100,915 km
<i>Coast area</i>	km ²
<i>Information available</i>	Coordinates of points determining the Coastline



Figure 19 Visualization of the available Coastline and Baseline for Norway

1.22 Poland

Country	
Poland	
<i>Data provider</i>	The United Nations Convention on the Law of the Sea (UNCLOS) data base.
<i>Link available</i>	http://www.marineregions.org/documents/POL_1991_Act.pdf
Baseline	
<i>Laws specifying the position of the baseline</i>	Act concerning the maritime areas of the Polish Republic and the marine administration, 21 March 1991
<i>Law defining the baseline:</i>	
<i>Information available</i>	Coordinates of points determining the Baseline
Coastline	
<i>Coast length</i>	1032 km
<i>Coast area</i>	km ²
<i>Information available</i>	

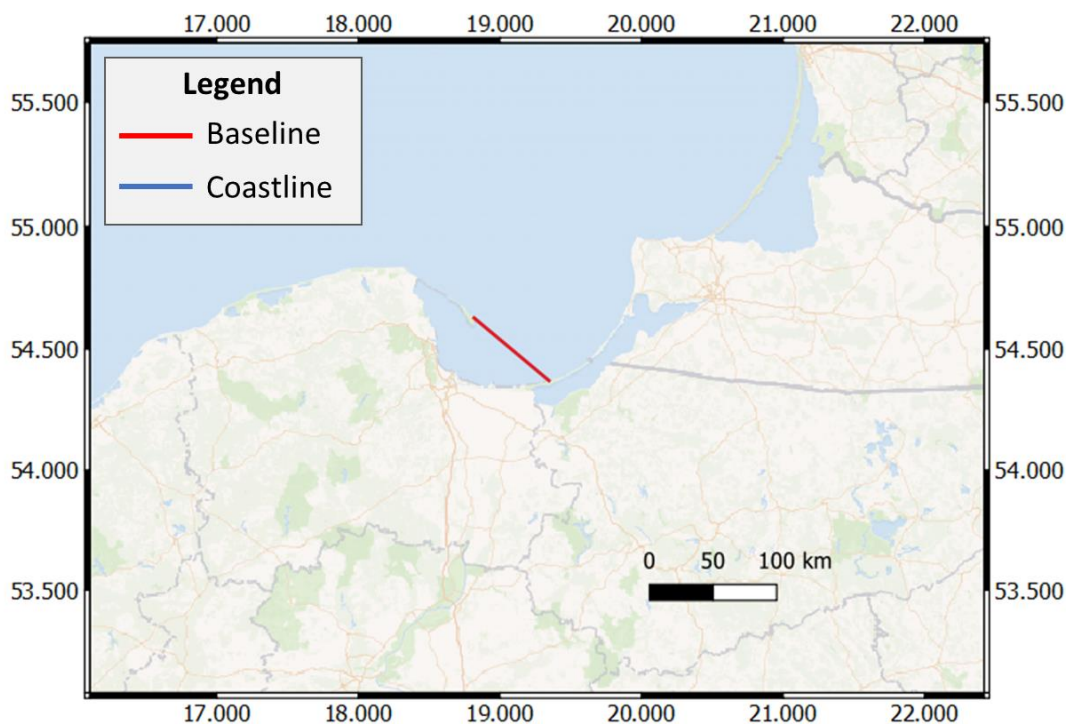


Figure 20 Visualization of the available Coastline and Baseline for Poland

1.23 Portugal

Country	Portugal
<i>Data provider</i>	Instituto Hidrográfico (IHPT), Instituto Português do Mar e da Atmosfera, I.P. (IPMA)
<i>Link available</i>	
Baseline	
<i>Laws specifying the position of the baseline</i>	
<i>Law defining the baseline:</i>	Decree-Law No. 495/85 of 29 November 1985
<i>Information available</i>	Coordinates of points determining the Baseline
Coastline	
<i>Coast length</i>	1793 km
<i>greeCoast area</i>	91854 km ²
<i>Information available</i>	Coordinates of points determining the Coastline

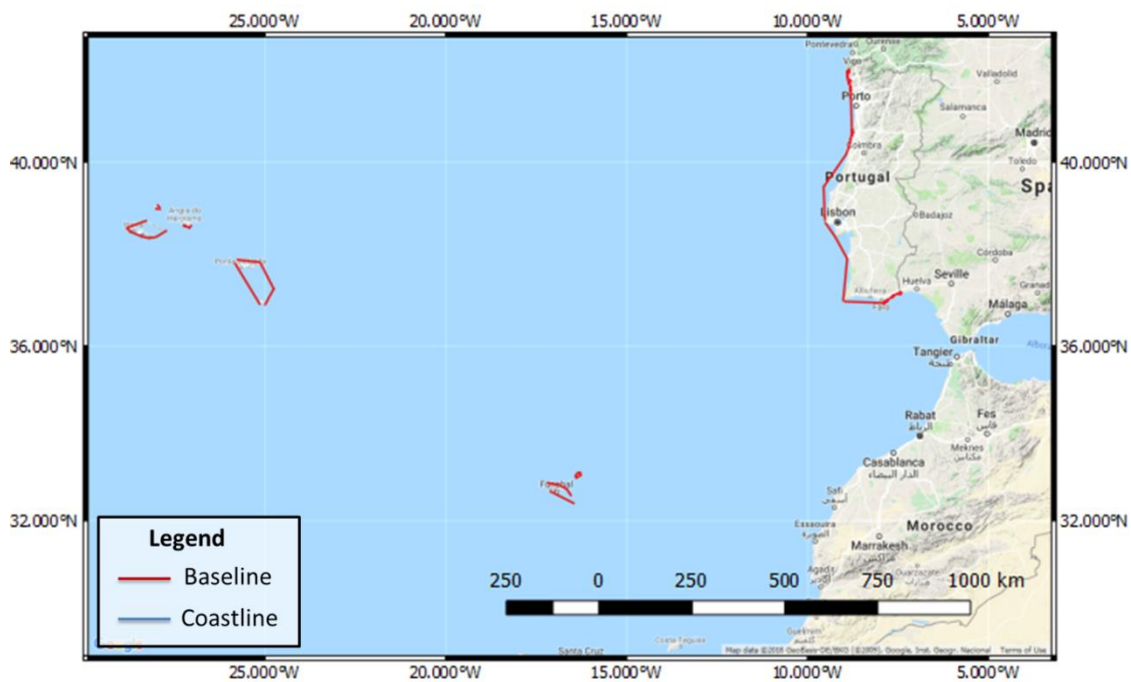


Figure 21 Visualization of the available Coastline and Baseline for Portugal

1.24 Romania

Country	Romania
<i>Data provider</i>	National Institute of Marine Geology and Geo-Ecology (GEOECOMAR)
<i>Link available</i>	
Baseline	
<i>Laws specifying the position of the baseline</i>	
<i>Law defining the baseline:</i>	Act concerning the Legal Regime of the Internal Waters, the Territorial Sea and the Contiguous Zone of Romania, 7 August 1990
<i>Information available</i>	Coordinates of points determining the Baseline
Coastline	
<i>Coast length</i>	245 km
<i>Coast area</i>	km ²
<i>Information available</i>	Coordinates of points determining the Coastline

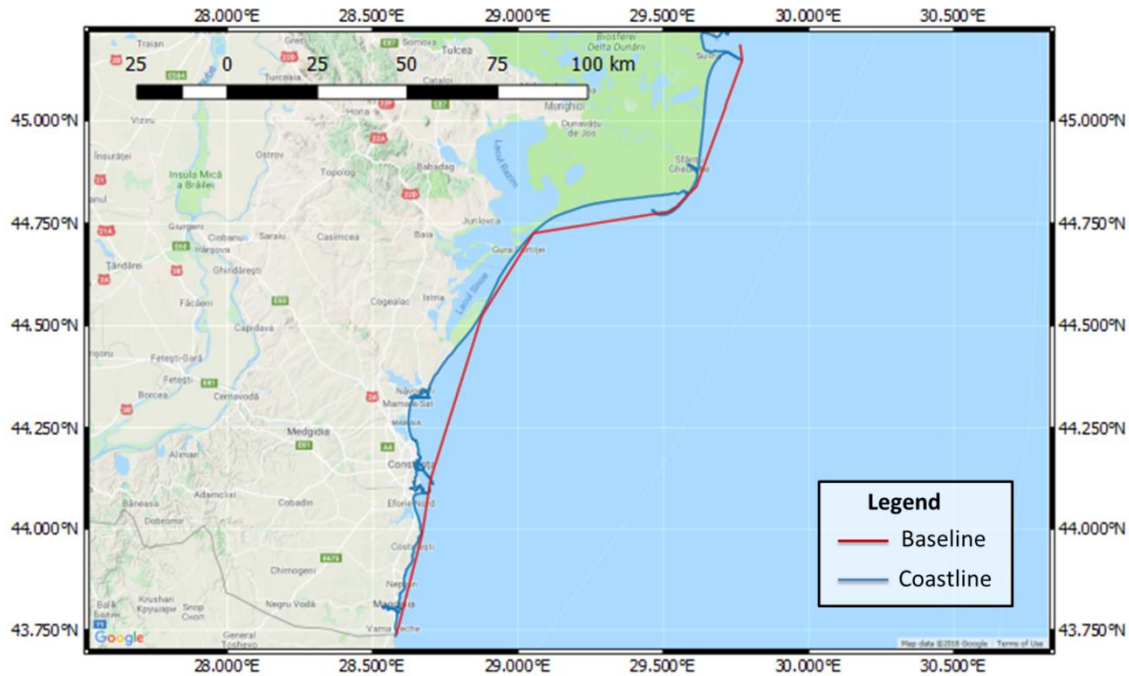


Figure 22 Visualization of the available Coastline and Baseline for Romania

1.25 Slovenia

Country	Slovenia
<i>Data provider</i>	Geodetic Institute of Slovenia (GIS)
<i>Link available</i>	
Baseline	
<i>Laws specifying the position of the baseline</i>	
<i>Law defining the baseline:</i>	Maritime Code, 2001 (Art. 13)
<i>Information available</i>	Coordinates of points determining the Coastline
Coastline	
<i>Coast length</i>	46,6 km
<i>Coast area</i>	km ²
<i>Information available</i>	Coordinates of points determining the Coastline

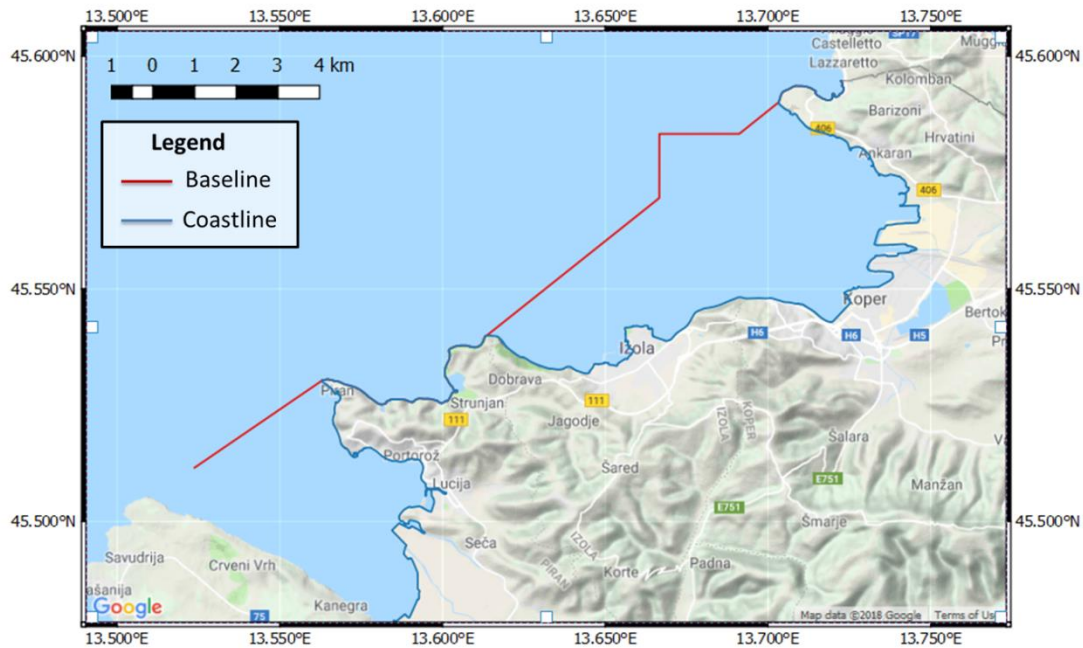


Figure 23 Visualization of the available Coastline and Baseline for Slovenia

1.26 Spain

Country	Spain
<i>Data provider</i>	Instituto Español de Oceanografía (IEO), Agencia Estatal Consejo Superior de Investigaciones Científicas (CSIC)
<i>Link available</i>	http://ideihm.covam.es/servicios.html
Baseline	
<i>Laws specifying the position of the baseline</i>	
<i>Law defining the baseline:</i>	Spanish Royal Decree 2510/1977, of August 5, on the drawing of straight baselines.
<i>Information available</i>	Coordinates of points (WGS-84) determining the straight baselines.
Coastline	
<i>Coast length</i>	5849 km
<i>Coast area</i>	505 988 km ²
<i>Information available</i>	Shape file containing the Spanish coastline
<i>Following legislation applies:</i>	Ley 7/1986, de 24 de enero, sobre Ordenación de la Cartografía. (Art. 6) 2. R.D. 1545/2007, de 23 de noviembre, por el que se regula el Sistema Cartográfico Nacional. (Chapter

III) 3. Ley 14/2010, de 5 de julio, sobre las infraestructuras y los servicios de información geográfica en España (LISIGE) (Art 11)

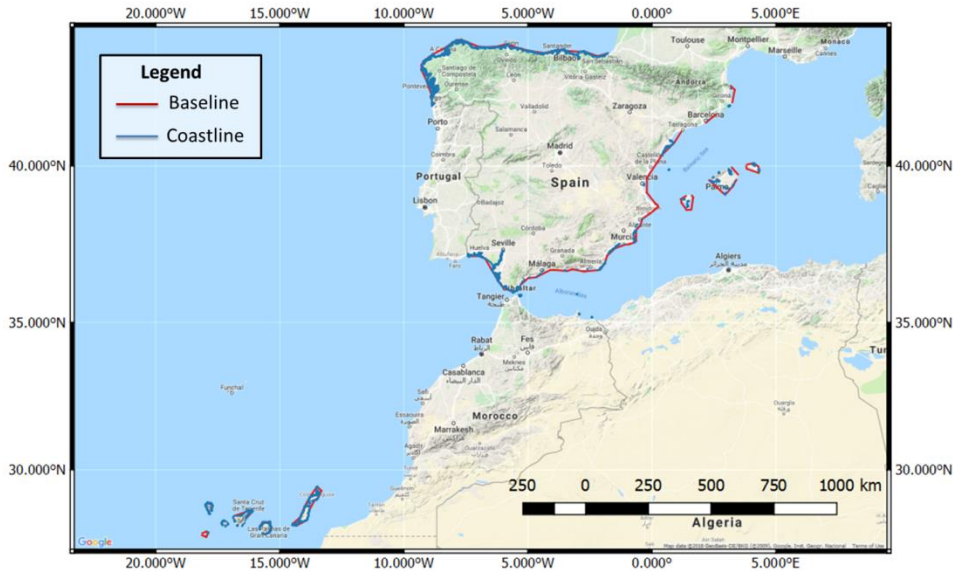


Figure 24 Visualization of the available Coastline and Baseline for Spain

1.27 Sweden

Country	Sweden
<i>Data provider</i>	Sjöfartsverket – Swedish Maritime Administration (SMA),
<i>Link available</i>	http://www.sjofartsverket.se/sv/Maritima-Tjanster/Havsgranser/ (In Swedish only)
Baseline	
<i>Laws specifying the position of the baseline</i>	Lagen (2017:1272) om Sveriges sjöterritorium och maritima zoner (Act regarding Swedish territorial sea and maritime zones) Lag (2017:1273) om Sveriges angränsande zon (Act regarding adjacent zone) Contains regulations of the Swedish baselines, territorial limits and adjacent zones.
<i>Law defining the baseline:</i>	(2017:1272) om Sveriges sjöterritorium och maritima zoner
<i>Information available</i>	http://www.sjofartsverket.se/sv/Maritima-Tjanster/Havsgranser/ (In Swedish only)
Coastline	
<i>Coast length</i>	48 000 km

Coast area

Total area of interest for SMA is approximately: 165 349 km² including the EEZ and lakes and channels used by merchant vessels.

The Territorial sea area excluding lakes is 82 062 km²

Information available

Coordinates of points determining the Coastline

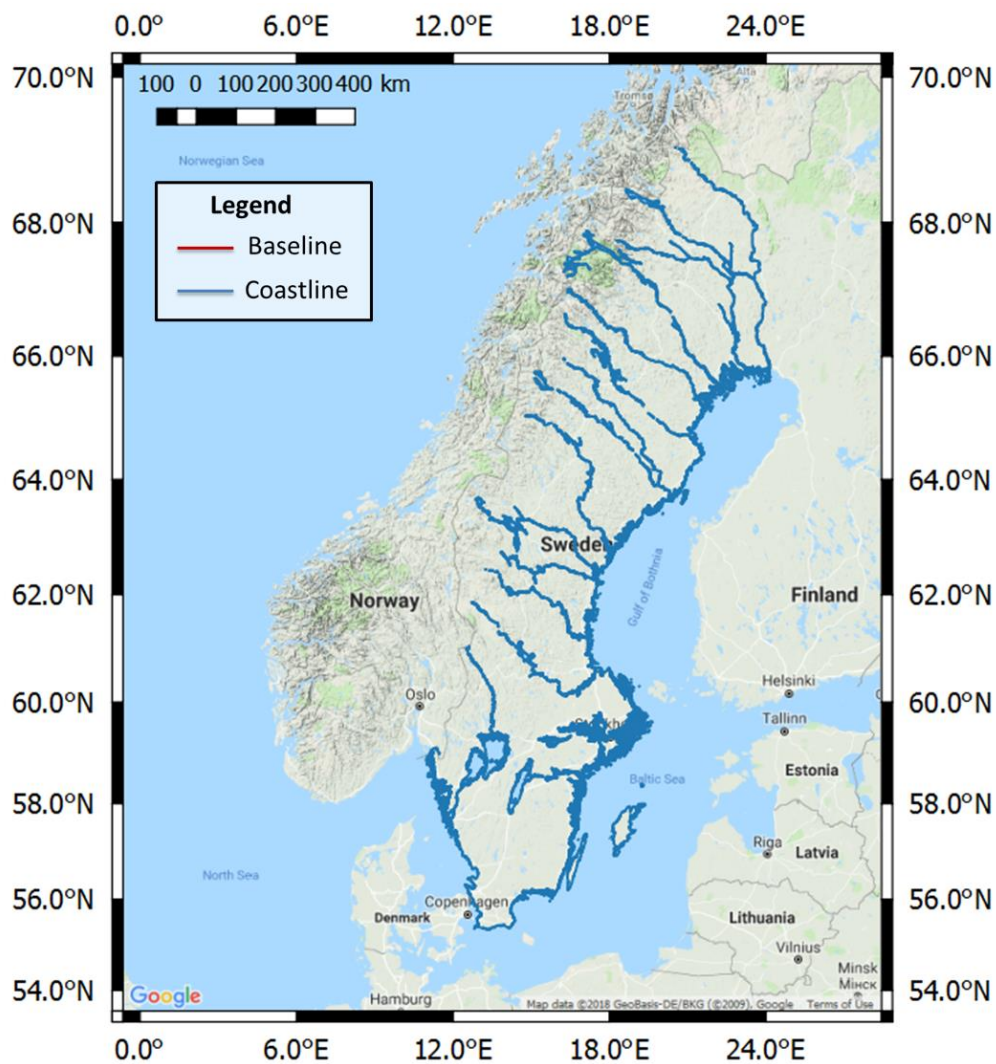


Figure 25 Visualization of the available Coastline and Baseline for Sweden

1.28 United Kingdom

Country	United Kingdom
<i>Data provider</i>	OceanWise Limited (OCEANWISE)
<i>Link available</i>	https://www.gov.uk/guidance/uk-maritime-limits-and-law-of-the-sea
Baseline	
<i>Laws specifying the position of the baseline</i>	
<i>Law defining the baseline:</i>	Territorial Waters (Amendment) Order in Council 1979, 23 May 1979
<i>Information available</i>	Coordinates of points determining the Coastline
Coastline	
<i>Coast length</i>	6028.40 km
<i>Coast area</i>	231 000 km ²
<i>Information available</i>	Coordinates of points determining the Coastline



Figure 26 Visualization of the available Coastline and Baseline for United Kingdom

Annex – digital coastlines and baselines

The national coastlines and baselines as collected and described in this report are available as digital files in shape format for downloading at the EMODnet Bathymetry portal (www.emodnet-bathymetry.eu).