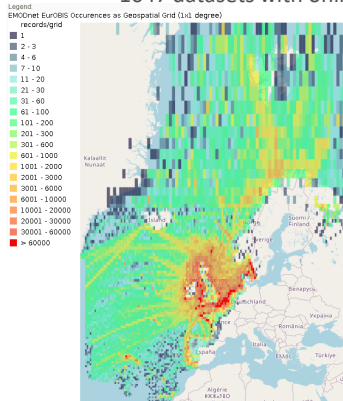


EMODnet Biology is the European service for marine biodiversity in situ data and follows the “collect once and use many times” philosophy. It was established in 2009 with the main objectives to improve access to high quality marine data for private bodies, public authorities and researchers.

## Data

1047 datasets with online data (records available via the [catalogue](#), ~25.1 M occurrence records)



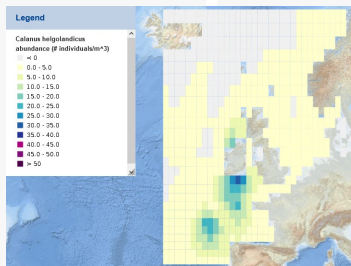
Data coverage per functional group



## Latest Data Products

[Species distribution model of invasive macroalgae](#)  
[Temporal Turnover in European Macrobenthos Communities](#)  
[Presence/absence data of macrozoobenthos in the European Seas](#)

[Presence/absence of macro-endobenthos in the Greater North Sea](#)  
[Probability maps for benthos species in the north Sea](#)  
[Calanus helgolandicus and finmarchicus temporal change](#)



The product ‘Calanus helgolandicus and finmarchicus temporal change’ provides a spatial interpolation of species observations in the North Sea using the DIVAnd software tool. The outputs are in terms of abundance and relative error.

## Tools/services

- [EMODnet Biology information](#)
- [OGC Webservices, R Packages, Online training, Data submission, QC tool](#)
- [Documentation \(reports and deliverables\)](#)
- [Use cases](#)

## International connections

