

Knowing more about Data Users

G. Breitbach, HZG

EMODnet Jamboree 21.10.2015





Spitsbergen



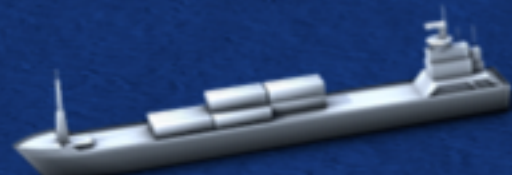
Seabird Tracking



Research Platform



Ship-based FerryBox



Waverider Buoy



Underwater Node



Radar



Research Vessel



Glider



Lander



Wadden Sea Pole



Coastal Research



BREMEN

HAMBURG

11:50 AM Water Temperature 11.87 °C
21-OCT-15 Salinity 18.72 PSU
Source: FerryBox Cuxhaven



Current
Field Today



All Live Data



HZG NLWKN HPA
ICBM MARUM BAW
FTZ BSH AWI

COSYNA Partners

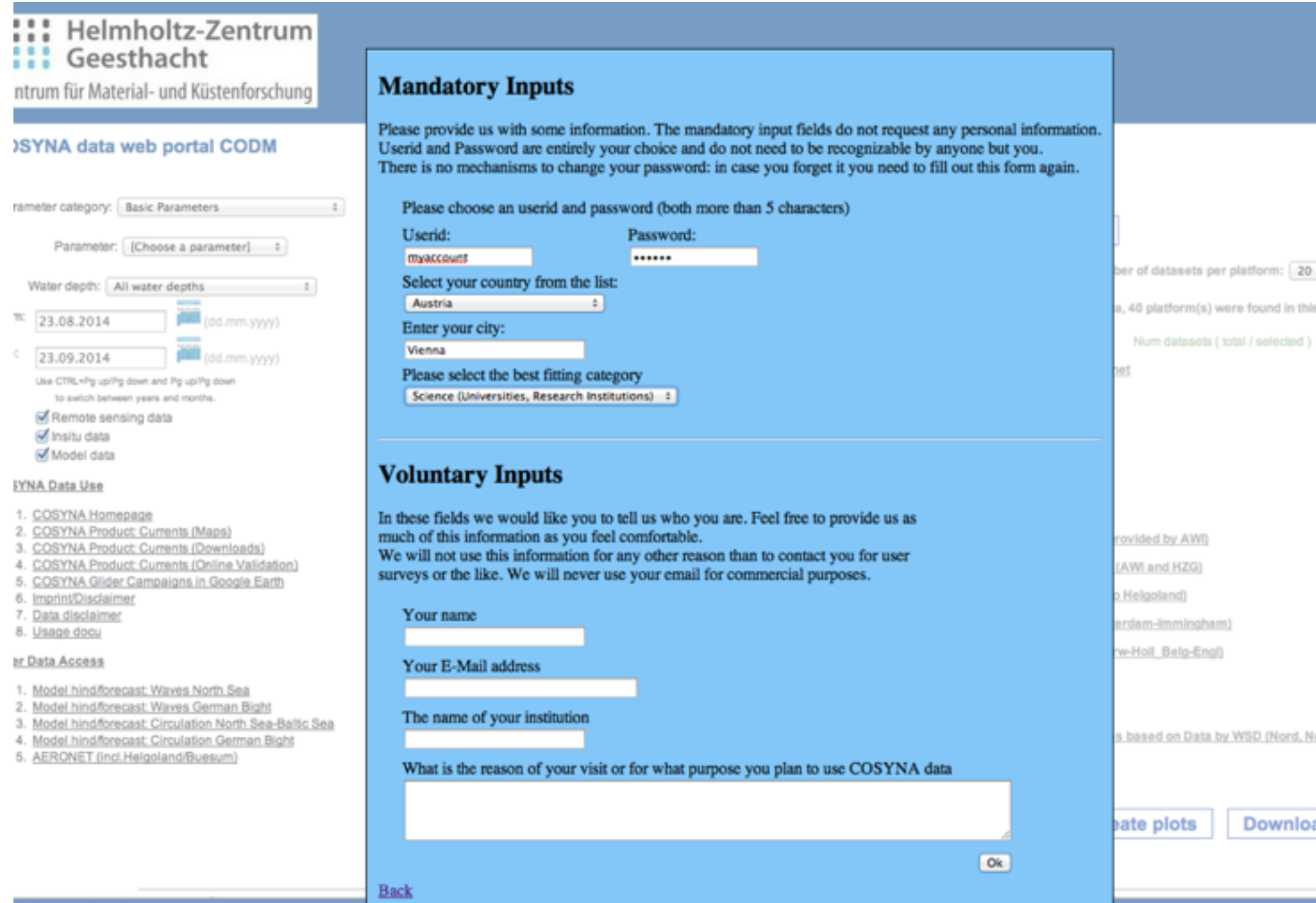
en
de

- Data level 0 means raw data. Access could be offered on private communication.
- Data level 3 are geo-referenced near-realtime quality controlled data provided through the COSYNA data portal <http://codm.hzg.de/codm>
- Data level 4 are finally quality controlled data which are published in an external database (PANGAEA) with DOI.
- COSYNA level 3 data are open to everybody. Fair use is asked for in a data disclaimer.

CODM - The COSYNA Data Portal

CODM - The COSYNA Data Portal

- User registration needed since November (mandatory: country, city and category).



The screenshot shows the registration page of the COSYNA data web portal CODM. The page is divided into two main sections: 'Mandatory Inputs' and 'Voluntary Inputs'.

Mandatory Inputs

Please provide us with some information. The mandatory input fields do not request any personal information. Userid and Password are entirely your choice and do not need to be recognizable by anyone but you. There is no mechanisms to change your password: in case you forget it you need to fill out this form again.

Please choose an userid and password (both more than 5 characters)

Userid: Password:

Select your country from the list:

Enter your city:

Please select the best fitting category

Voluntary Inputs

In these fields we would like you to tell us who you are. Feel free to provide us as much of this information as you feel comfortable. We will not use this information for any other reason than to contact you for user surveys or the like. We will never use your email for commercial purposes.

Your name

Your E-Mail address

The name of your institution

What is the reason of your visit or for what purpose you plan to use COSYNA data

[Back](#)

Left sidebar:

Helmholtz-Zentrum Geesthacht
ntum für Material- und Küstenforschung

COSYNA data web portal CODM

Parameter category:

Parameter:

Water depth:

TC: (dd.mm.yyyy)

C: (dd.mm.yyyy)

Use CTRL+Pg up/Pg down and Pg up/Pg down to switch between years and months.

☒ Remote sensing data
☒ Insitu data
☒ Model data

COSYNA Data Use

1. [COSYNA Homepage](#)
2. [COSYNA Product: Currents \(Maps\)](#)
3. [COSYNA Product: Currents \(Downloads\)](#)
4. [COSYNA Product: Currents \(Online Validation\)](#)
5. [COSYNA Glider Campaigns in Google Earth](#)
6. [Imprint/Disclaimer](#)
7. [Data disclaimer](#)
8. [Usage docu](#)

For Data Access

1. [Model hindforecast: Waves North Sea](#)
2. [Model hindforecast: Waves German Bight](#)
3. [Model hindforecast: Circulation North Sea-Baltic Sea](#)
4. [Model hindforecast: Circulation German Bight](#)
5. [AERONET \(incl. Helgoland/Buesum\)](#)

CODM - The COSYNA Data Portal

- User registration needed since November (mandatory: country, city and category).
- 3 clicks to data

COSYNA data web portal CODM

Usage hint: 1. Select Parameter, Time and Area. 2. Select all datasets. 3. Create map, Create plots or Download

[Feedback](#)

Parameter category:

Parameter:

Water depth:

From: (dd.mm.yyyy)

To: (dd.mm.yyyy)

Use CTRL+Pg up/Pg down and Pg up/Pg down to switch between years and months.

☒ Remote sensing data
☒ In situ data
☒ Model data

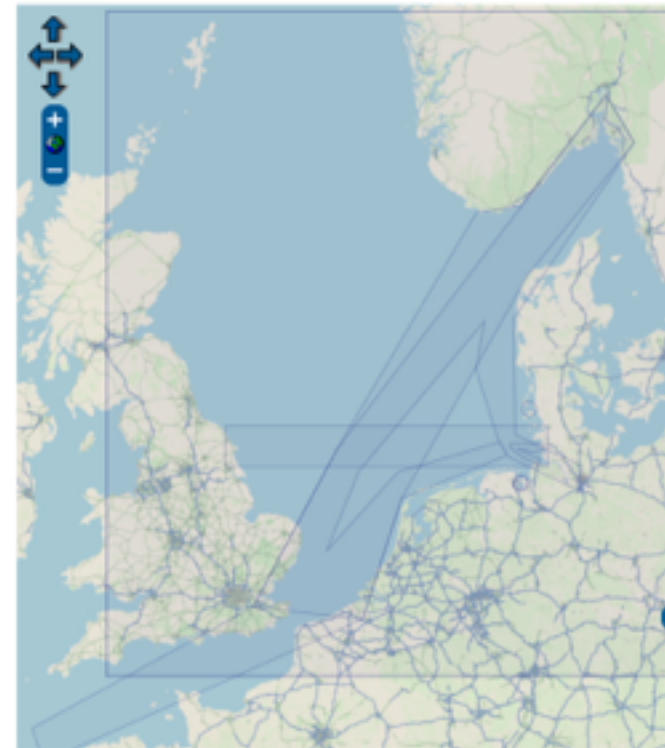
COSYNA Data Use

1. [COSYNA Homepage](#)
2. [COSYNA Product: Currents \(Maps\)](#)
3. [COSYNA Product: Currents \(Downloads\)](#)
4. [COSYNA Product: Currents \(Online Validation\)](#)
5. [COSYNA Glider Campaigns in Google Earth](#)
6. [Imprint/Disclaimer](#)
7. [Data disclaimer](#)
8. [Usage.docu](#)

Other Data Access

1. [Model hind/forecast: Waves North Sea](#)
2. [Model hind/forecast: Waves German Bight](#)

Modify size: - +
Click and drag for panning.
<SHIFT>-click and drag for zooming.



12.87973, 57.70382

1. [?? OpenStreetMap](#) and partners, License: [CC BY-SA](#).
2. ImportXmi script(s) provided for free by <http://www.howtocreate.co.uk>.

[Select all datasets](#)

[List datasets](#)

Number of datasets per platform:

According to your search criteria, 9 platform(s) were found in this area.

Num datasets (total / selected)

- ▶ [Ferrybox on FunnyGirl \(to Helgoland\)](#)
- ▶ [Ferrybox on Lysbris \(Germany-England-Norway\)](#)
- ▶ [Ferrybox on Lysbris \(Norw-Holl_Belg-Engl\)](#)
- ▶ [Ferrybox on TorDania \(Cuxhaven-Immingham\)](#)
- ▶ [Meris on Envisat](#)
- ▶ [Modis on Aqua or Terra](#)
- ▶ [Pile Hoernum1](#)
- ▶ [Pile Jade1](#)
- ▶ [Pile Jade2](#)

For selected data sources:

[Create map](#)

[Create plots](#)

[Downloads](#)

CODM - The COSYNA Data Portal

- User registration needed since November (mandatory: country, city and category).
- 3 clicks to data

COSYNA data web portal CODM

Usage hint: 1. Select Parameter, Time and Area. 2. Select all datasets. 3. Create map, Create plots or Download

Parameter category: Basic Parameters

Parameter: chlorophyll-a

Water depth: All water depths

From: 21.04.2008 (dd.mm.yyyy)

To: 02.05.2008 (dd.mm.yyyy)

Use CTRL+Pg up/Pg down and Pg up/Pg down to switch between years and months.

☒ Remote sensing data
☒ In situ data
☒ Model data

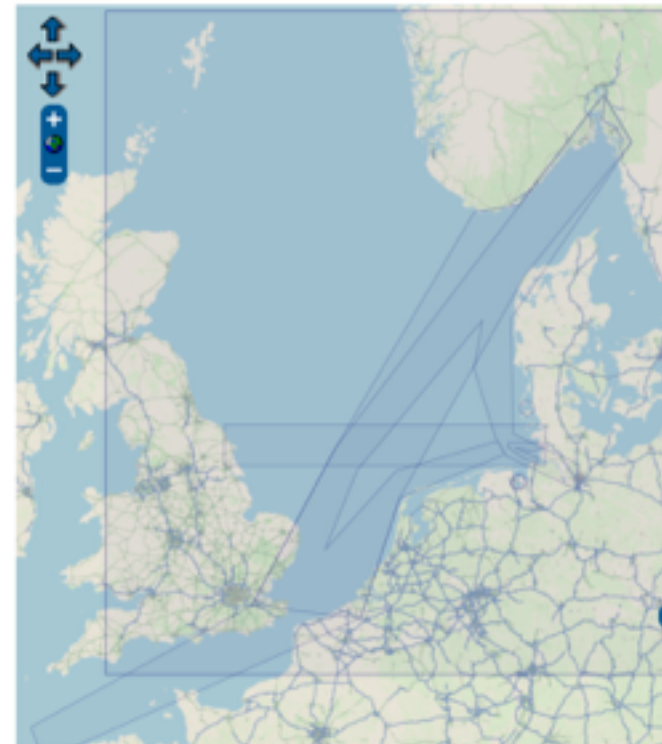
COSYNA Data Use

1. COSYNA Homepage
2. COSYNA Product: Currents (Maps)
3. COSYNA Product: Currents (Downloads)
4. COSYNA Product: Currents (Online Validation)
5. COSYNA Glider Campaigns in Google Earth
6. Imprint/Disclaimer
7. Data disclaimer
8. Usage docu

Other Data Access

1. Model hind/forecast: Waves North Sea

Modify size: - +
Click and drag for panning.
<SHIFT>-click and drag for zooming.



8.98931, 58.39109

1. ?? OpenStreetMap and partners, License: CC BY-SA.
2. ImportXml script(s) provided for free by <http://www.howtocreate.co.uk>.

[Feedback](#)

Select all datasets

List datasets

Number of datasets per platform: 20

According to your search criteria, 9 platform(s) were found in this area.

Num datasets (total / selected)	
Ferrybox on FunnyGirl (to Helgoland)	No datasets available!
Ferrybox on Lysbris (Germany-England-Norway)	No datasets available!
Ferrybox on Lysbris (Norw-Holl_Belg-Engl)	No datasets available!
Ferrybox on TorDania (Cuxhaven-Immingham)	(8 / 8)
Meris on Envisat	(11 / 11)
Modis on Aqua or Terra	No datasets available!
Pile Hoernum1	(1 / 1)
Pile Jade1	(1 / 1)
Pile Jade2	(1 / 1)

For selected data sources:

Create map

Create plots

Downloads

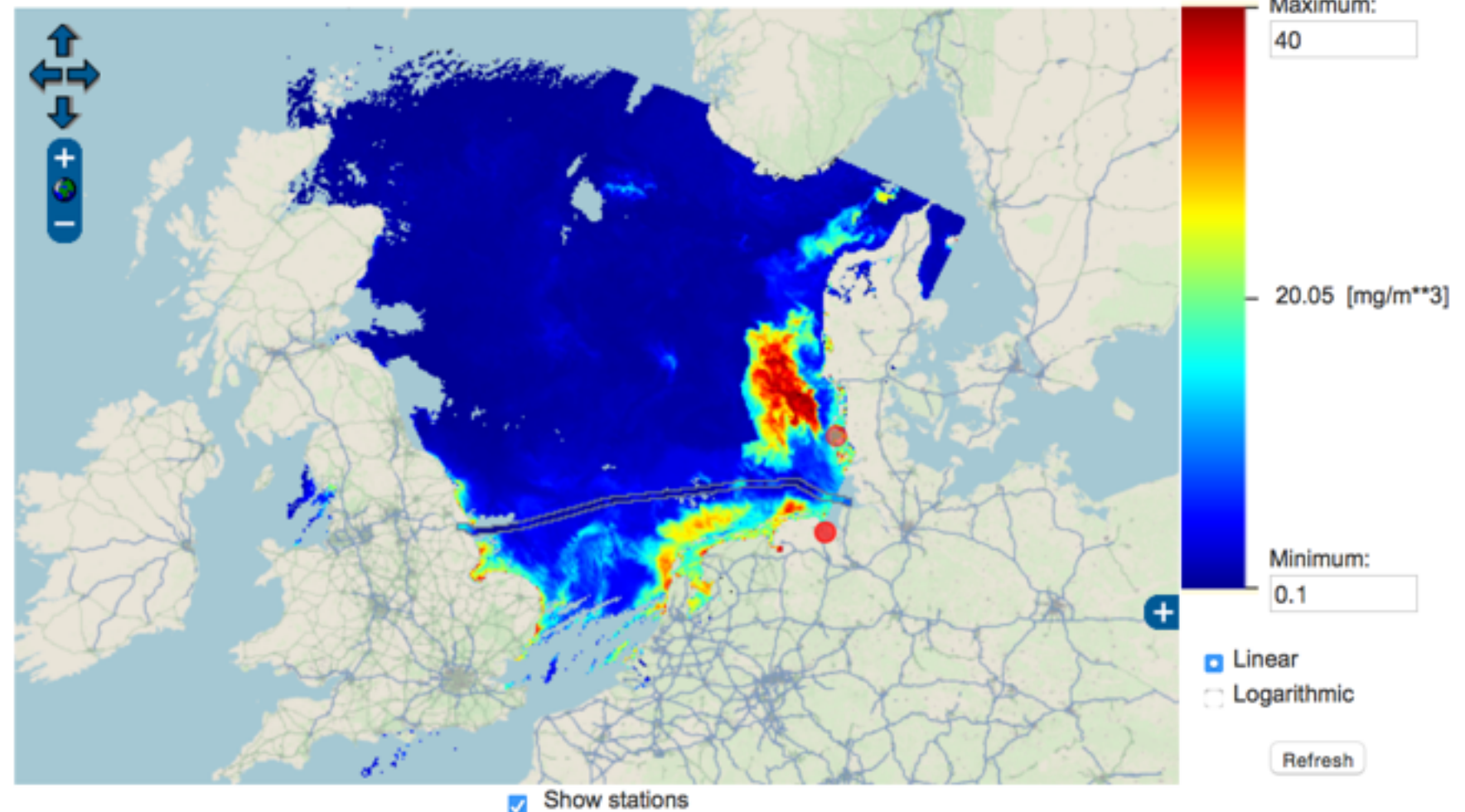
CODM - The COSYNA Data Portal

- User registration needed since November (mandatory: country, city and category).
- 3 clicks to data

Maps for chlorophyll-a [mg/m³]

Date range: 21.04.2008 - 02.05.2008

Modify size: — + Click and drag for panning. <SHIFT>-click and drag for zooming.



Platforms:

☒ show **Meris on Envisat**

☒ selected layer with time slider ☐ show 4 of 11 layers, starting with selected
21.04.2008 - 10:48:39

21.04.2008 02.05.2008
< >

☒ show **Ferrybox on TorDania (Cuxhaven-Immingham)**

☒ selected layer with time slider ☐ show 4 of 8 layers, starting with selected
22.04.2008 - 00:50:38

21.04.2008 02.05.2008

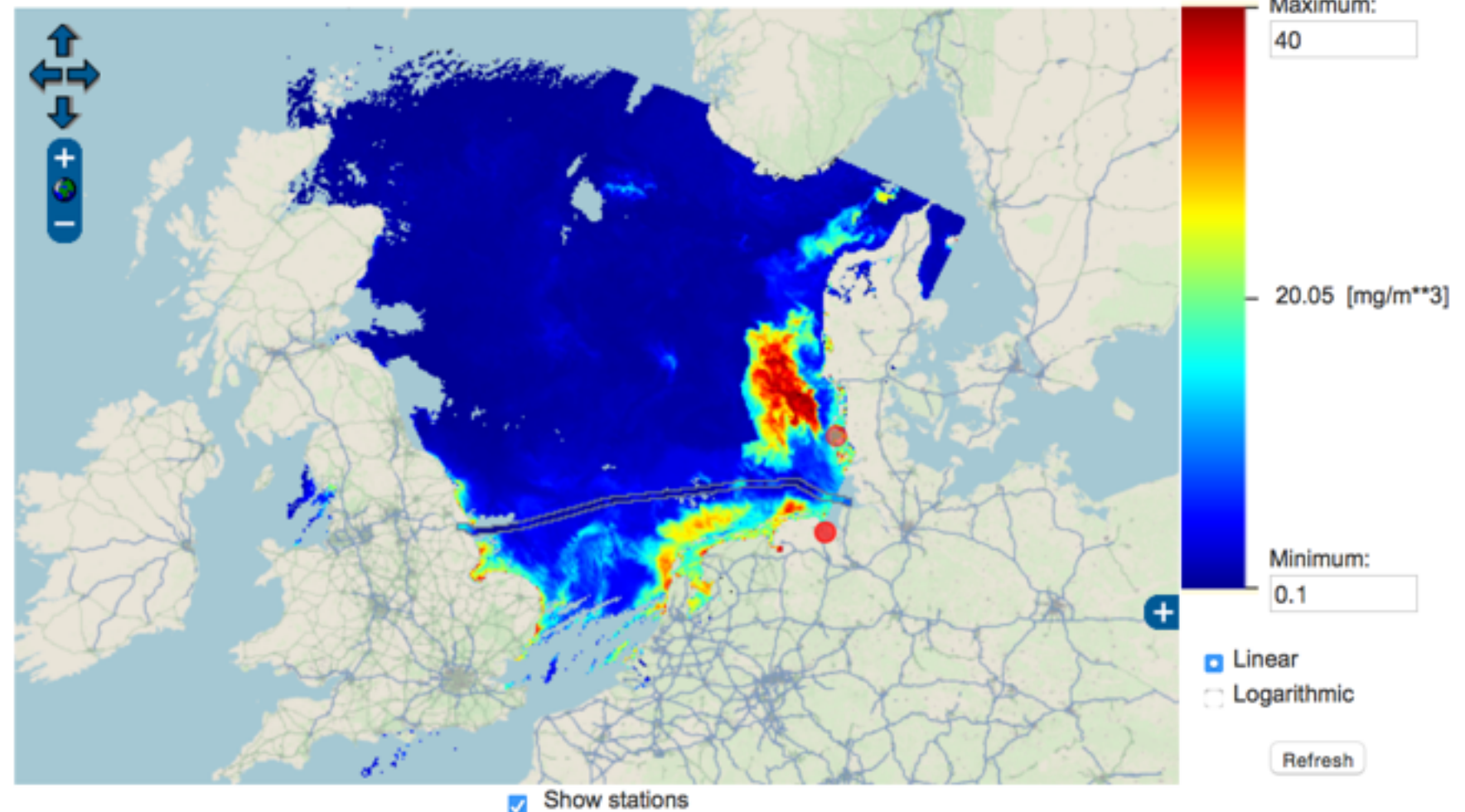
CODM - The COSYNA Data Portal

- User registration needed since November (mandatory: country, city and category).
- 3 clicks to data
- all data can be downloaded numerically as netcdf files or data from database as xml.

Maps for chlorophyll-a [mg/m³]

Date range: 21.04.2008 - 02.05.2008

Modify size: — + Click and drag for panning. <SHIFT>-click and drag for zooming.



Platforms:

☒ show **Meris on Envisat**

☒ selected layer with time slider ☐ show 4 of 11 layers, starting with selected
21.04.2008 - 10:48:39

21.04.2008 02.05.2008
< >

☒ show **Ferrybox on TorDania (Cuxhaven-Immingham)**

☒ selected layer with time slider ☐ show 4 of 8 layers, starting with selected
22.04.2008 - 00:50:38

21.04.2008 02.05.2008

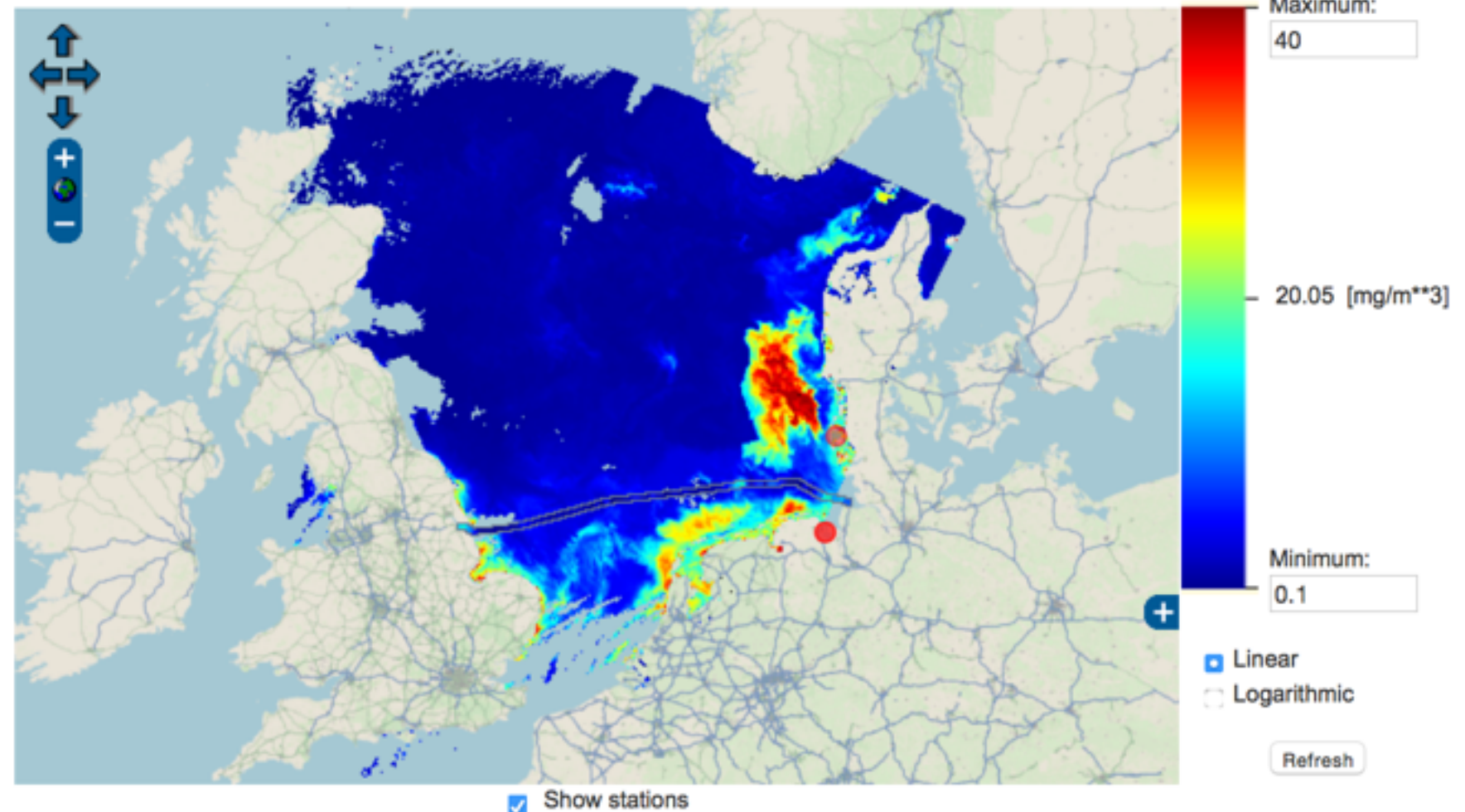
CODM - The COSYNA Data Portal

- User registration needed since November (mandatory: country, city and category).
- 3 clicks to data
- all data can be downloaded numerically as netcdf files or data from database as xml.
- ASCII download (netcdf) and tabular download are also provided.

Maps for chlorophyll-a [mg/m³]

Date range: 21.04.2008 - 02.05.2008

Modify size: — + Click and drag for panning. <SHIFT>-click and drag for zooming.



Platforms:

☒ show **Meris on Envisat**

☒ selected layer with time slider ☐ show 4 of 11 layers, starting with selected
21.04.2008 - 10:48:39

21.04.2008 02.05.2008
< >

☒ show **Ferrybox on TorDania (Cuxhaven-Immingham)**

☒ selected layer with time slider ☐ show 4 of 8 layers, starting with selected
22.04.2008 - 00:50:38

21.04.2008 02.05.2008

Mandatory Inputs

Please provide us with some information. The mandatory input fields do not request any personal information. Userid and Password are entirely your choice and do not need to be recognizable by anyone but you. There is no mechanisms to change your password: in case you forget it you need to fill out this form again.

Please choose an userid and password (both more than 5 characters)

Userid:

Password:

Select your country from the list:

Enter your city:

Please select the best fitting category

Additional Voluntary Input

Voluntary Inputs

In these fields we would like you to tell us who you are. Feel free to provide us as much of this information as you feel comfortable.

We will not use this information for any other reason than to contact you for user surveys or the like. We will never use your email for commercial purposes.

Your name

Your E-Mail address

The name of your institution

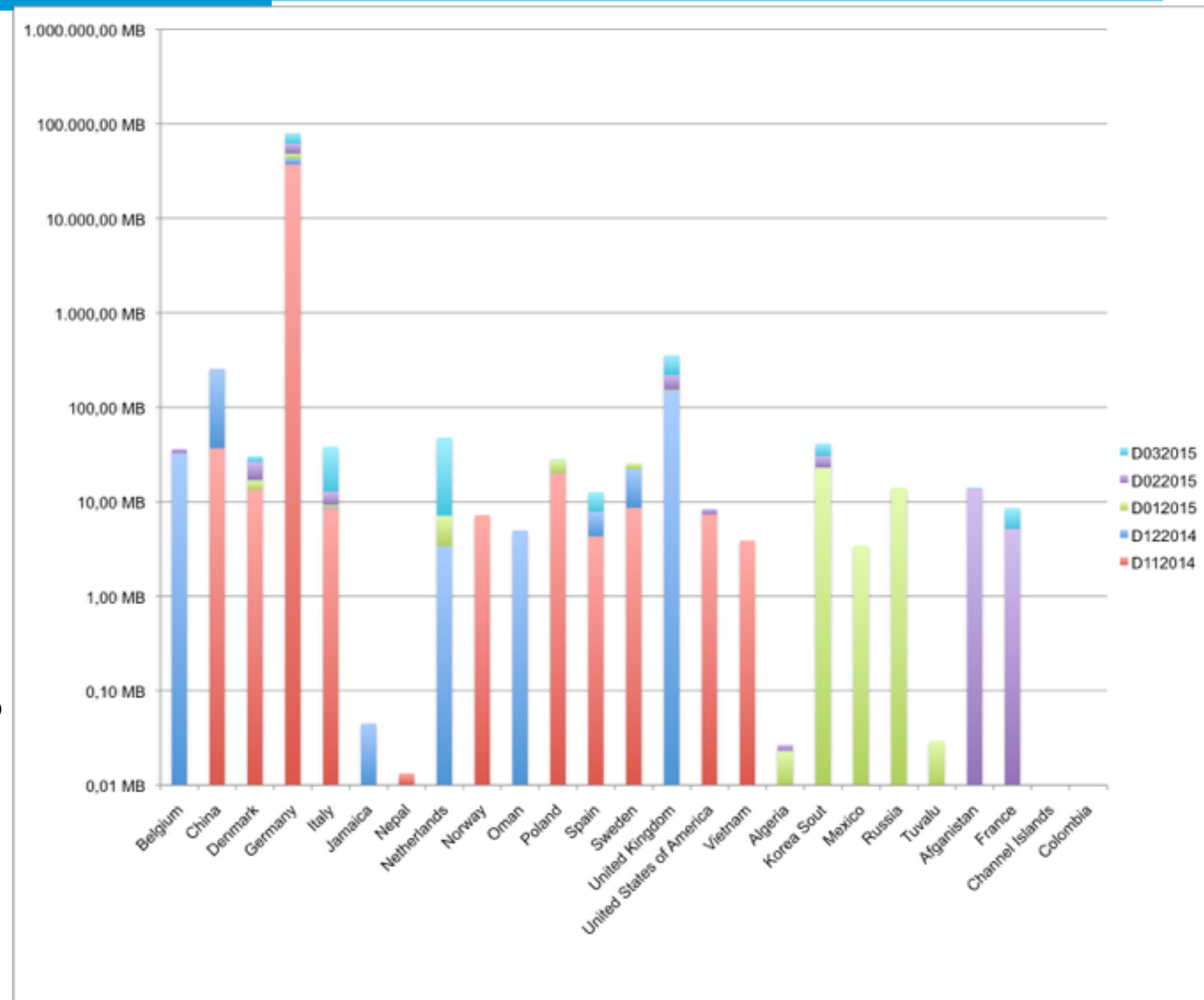
What is the reason of your visit or for what purpose you plan to use COSYNA data

Ok

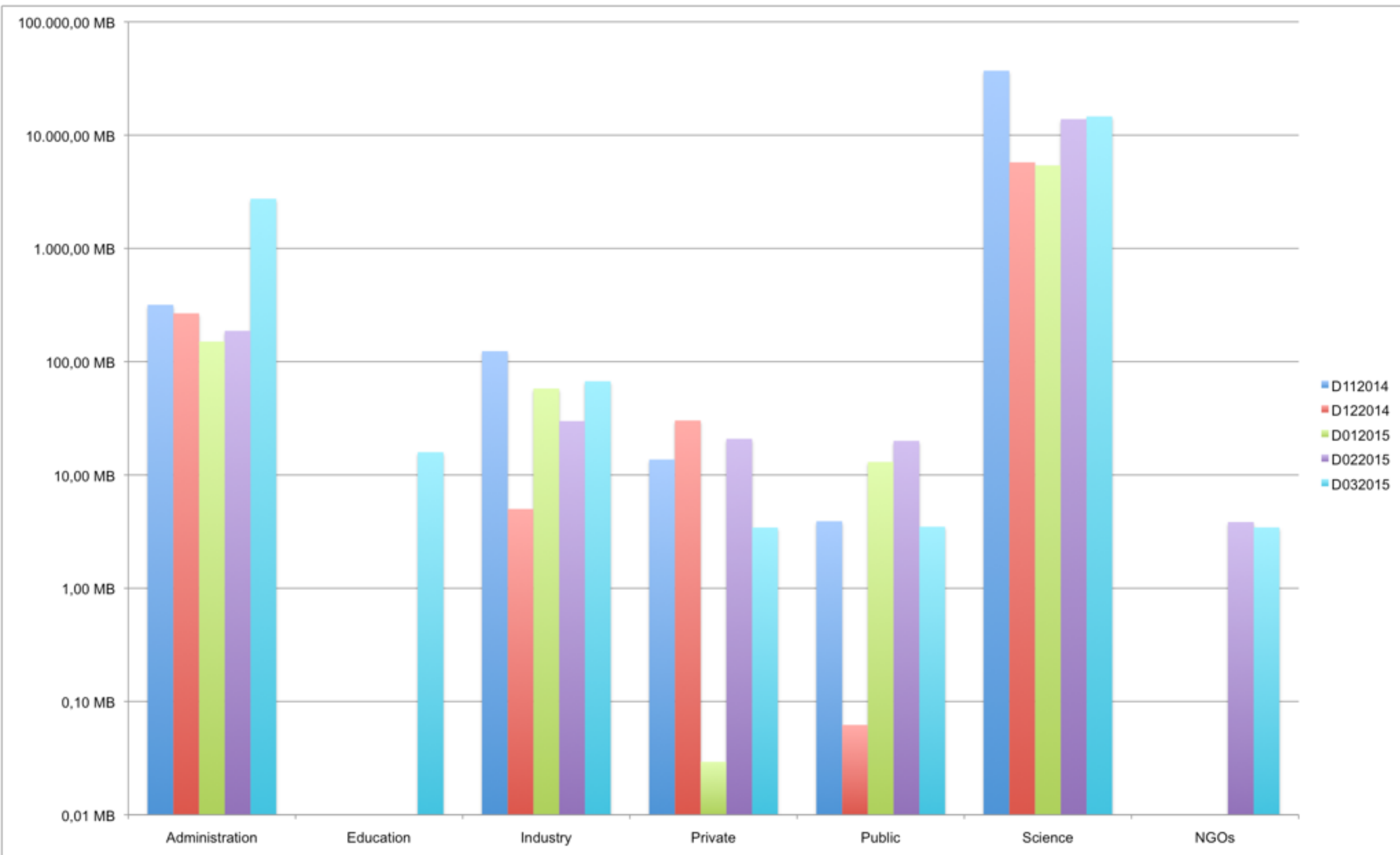
[Back](#)

Some Results

- The COSYNA data portal has 360 registered users with 101 users accessing more than twice
- The users came from 35 countries
- First graphik results are after 5 months



Categories



- A method is presented to get information without restricting the open access to data.
- The results show the mostly scientist and administration are interested in data.
- The others have a look at the data but mostly don't come back often.
- COSYNA developed an App which has focuses more on non-scientific users.